



MINI-SPLIT PARTS & ACCESSORIES BROCHURE

CONDENSATE PUMPS • CONTROLS • TOOLS • PADS
MAINTENANCE • SUPPORTS • LINESET COVERS & FITTINGS
LINESET WIRE • REFRIGERANT FLEX LINES • ELECTRICAL

CONDENSATE PUMPS & ACCESSORIES



MINI-SPLIT CONDENSATE PUMP

PSCPMS115
115V – 2 gph flow rate
PSCPMS230
230V – 2 gph flow rate



- Use with most mini-split air conditioning units up to 25,000 BTU/hr
- For intermittent operation, maximum 50% duty cycle
- Condensate must be no more than half the pump's flow rate for any given head

CONDENSATE PUMPS & ACCESSORIES



230V CONDENSATE REMOVAL PUMP WITH SWITCH

PSCPMSOP230



- Removes condensate from wall mount air conditioners up to 34,000 BTU
- Clear, extra large reservoir for easy, visual inspection
- Safety alarm ready

CONDENSATE PUMPS & ACCESSORIES



MICROBLUE® 110/230V

BX85003



- UNIT: 0 - 18000 BTU
- MAX FLOW: 1.3 G/HOUR
- MAX HEAD: 16.4 FT
- MAX LIFT: 6.6 FT
- DIMENSIONS (L x W x H): 5.9" x 1.5" x 1.6"
- 3-year warranty

CONDENSATE PUMPS & ACCESSORIES



MAXIBLUE® 110V

BX87711

MAXIBLUE® PRO 230V

BX87721



- UNIT: 18000 - 48000 BTU
- MAX FLOW: 3.7 G/HOUR
- MAX HEAD: 23 FT
- MAX LIFT: 16.5 FT
- DIMENSIONS (L x W x H): 6.2" x 2.3" x 2.6"
- 3-year warranty

ELECTRICAL



WHIPS

DIV6126NM
DIV6346NM



- A labor saving convenience kit for A/C unit hook-up
- Three distinct wire colors for ease of hook-up
- Whips with metallic connectors are available

DISCONNECTS

DIVDDS30
DIVDDS60



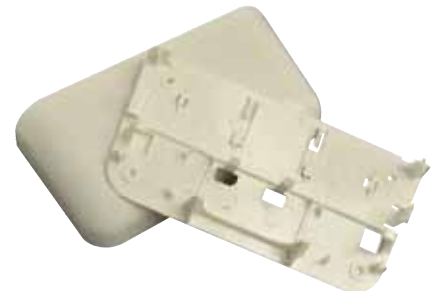
- Single phase 240V
- Reversible side-opening door
- Side, bottom and rear knockouts
- Rainproof, NEMA 3R enclosure

CONDENSATE PUMPS & ACCESSORIES



FASCIA KIT FOR MICROBLUE® PUMP

BT18016



PURE WHITE FASCIA KIT / T18 - 016

- Adapted to fit the new MICROBLUE® condensate pump
- Accommodates pump and reservoir, hides various cables and tubing at the same time
- Easy-to-use detachable cover and can sit nicely under any A/C unit

ACCESSORY



SS610E MINI-SPLIT SAFE-T-SWITCH

REC97622



- Designed for mini-split systems
- Installation directly on primary drain pan or clipped to coils above primary drain pan
- Multi-voltage (No batteries required)
- Can be wired in both normally open and normally closed systems

ACCESSORY



CONDENSATE DRAIN PAN EZ-TRAP

REC83210



- 3/4" Standard Switched Cross Trap Kit
- Offers the most comprehensive range of transparent condensate traps with float switch overflow protection
- Suitable for many applications including automatic shut down
- Clear U-bend for inspection and access ports for easy cleaning

CONTROLS



KUMO TOUCH™

MMHK2



- Dual setpoint control with system changeover
- Touch panel, backlit, easy-to-read display
- New RedLINK™ 3.0 wireless technology
- kumo cloud and MMHK2 can work together on the same indoor unit

CONTROLS



WIRELESS KUMO CLOUD® INTERFACE CONTROL

MPACUSWHS002WF2



- Allows for a Mitsubishi Electric indoor unit to communicate remotely with the kumo cloud® app and web service over local network
- Mode button to enter Bluetooth Configuration to pair with local wireless network

CONTROLS



DELUXE MA REMOTE CONTROL

MPAR40MAAU



- Controls up to 16 zones
- Large backlit LCD with two display modes: Full or Basic
- Supports P-Series rotation, advanced cassette operations, 3D i-See sensor functions, CITY MULTI setback and Daylight Savings Time

CONTROLS



TRANSFORMER REQUIRED

THERMOSTAT INTERFACE CONTROL

MPACUS444CN1



- Control your Zoned Comfort Solution®
- Wires back to the indoor unit using CN105 to replace the return air temperature sensor
- Wiring length: 39' (12 m)
- ABS resin exterior shell

CONTROLS

Honeywell
Home

D6 DUCTLESS CONTROLLER

HDC6000WF1001



- Replaces ductless mini-split handheld controls
- Sends commands over infrared to set the equipment mode
- No wiring to the unit, uses IR signal to communicate with mini-split, 24V required
- Adjust set temperature, and change fan speeds

CONTROLS

**MITSUBISHI
ELECTRIC**
COOLING & HEATING

SERVICE TOOL / CONTROL

MPACSK52ST



- Control/Service Tool
(For R410a Inverter P-Series Only)
- Used to display operation and self-diagnosis state

TOOLS



MADE IN THE
USA

MINI-SPLIT TOOL KIT WITH BAG

JMSKIT3



- Ratcheting flare tool with eccentric cone flaring for tubes with an OD of 3/16", 1/4", 5/16", 3/8", 1/2", 5/8" & 3/4"
- Torque Wrench Kit with (6) Spanner Heads: 17, 22, 24, 26, 27 & 29mm
- Hex Key Set: For Metric 2–8mm & Imperial 5/64"–1/4"
- Brass Adapter: 5/16" Female x (2) 1/4" SAE Male
- Brass Caps: (10) 1/4" & (5) 5/16"

TOOLS



MADE IN THE
USA

TORQUE WRENCH KIT 17MM TO 29MM

JTRQ1080



- Multiple drive size set
- 1/2" DR ratchet head
- Six piece torque wrench kit
- Spanner Heads: 17, 22, 24, 26, 27 & 29mm

TOOLS



MADE IN THE
USA

FLARE TOOL KIT

JT30600



- Internal clutch prevents over-torquing
- Eccentric cone flaring for tubes with an OD of 3/16" 1/4", 5/16", 3/8", 1/2", 5/8" & 3/4"

ELECTRICAL

**MITSUBISHI
ELECTRIC**
COOLING & HEATING

FUSE 6.3 AMP 250V

MR01E14239



- 250 volt
- 6.3 amp fuse
- For Mitsubishi M & P Series units

MISCELLANEOUS ACCESSORIES



MADE IN THE
USA

SAE BRASS ADAPTER

JA31656



- 1/4" SAE male brass adapter
- 5/16" SAE female brass adapter

MISCELLANEOUS ACCESSORIES



MADE IN THE
USA

1/4" ID CLEAR VINYL TUBING 100' ROLL

DIV714



- Size: 3/8" ID x 100'
- Maximum Service Temperature: 140°F

MISCELLANEOUS ACCESSORIES



MADE IN THE
USA

SHIELD LOCKING CAP R-410A

JSHLDE4



- Pink, R-410A refrigerant
- All brass design, no corrosion
- Protective, waterproof color-coded

PADS



EQUIPMENT PAD



- PSCPE18383
18" X 38" X 3"
- PSCPE24363
24" X 36" X 3"
- PSCPE24363
24" X 36" X 3"

- Uses flanges and support ribs

MAINTENANCE



A CSW Industrials Company

EVAP COIL CLEANER KIT

- REC82560 Coil Cleaner Kit
- REC82562 Replacement Funnel Bags
- REC82565 1 Gallon Coil Cleaner



- Deep clean the indoor evaporator of mini-split A/C units
- Includes: Desolv cleaning solution (1 gal), C-Band frame assembly, Single-use replacement bags (2), wedge sheets (2), drain pail (5 gal)

SUPPORT



A CSW Industrials Company

MIGHTY BRACKET MINI-SPLIT INSTALLATION SUPPORT TOOL

REC97705



- Clips to the mounting bracket of most mini-split brands
- Holds unit securely in place during installation without damaging walls

SUPPORT



A CSW Industrials Company

WALL CONDENSER BRACKET

REC87733 300 LBS
REC87735 500 LBS



- Heavy-duty steel with powdercoat finish
- Sliding cross bar for exceptional equipment width range
- Level for added convenience

SUPPORT



A CSW Industrials Company

CONDENSER DUPLEX STAND

REC87744



- Sliding cross bar gives this bracket an exceptional equipment width range
- Available in stainless steel
- Includes level

SUPPORT



A CSW Industrials Company

CONDENSER SLAB STAND

REC87743



- Raises condenser up above a flat surface
- Each leg is independently adjustable for uneven surfaces
- Anti-slip rubber feet with powdercoat finish
- Minimum / maximum mounting width: 11-3/4" – 27-1/2"

LINESET COVERS & FITTINGS



- Interlocking system reduces installation time
- Can be installed outside or inside
- Original natural color blends well with almost any wall construction aesthetic and is UV resistant

REFRIGERANT FLEX LINES



A CSW Industrials Company

FLEXIBLE REFRIGERANT LINE CONNECTOR

REC66731 1/4" X 36"
REC66733 3/8" X 36"
REC66735 5/8" X 36"
REC66731 1/2" X 36"



- Eliminates kinking of copper refrigerant tubing when wall-mounting mini-split evaporators
- Easy flaring

LINESETS



- Linesets available in 15', 30', 50', 65' lengths
- Standard and K-Flex Titan UV insulation available
- Options include: flare nuts, built-in wire, both lines insulated

LINESET WIRE



STRANDED MINI-SPLIT WIRE

S58225705	14/4 600V 50' Stranded	S57036507	16/2 Shield Wire 50'
S58225703	14/4 600V 250' Stranded	S57036501	16/2 Shield Wire 250'
S58340803	14/4 Shield Wire 50'	S58628801	16/4 Shield Wire 50'
S58340802	14/4 Shield Wire 250'	S58628802	16/4 Shield Wire 250'



- EZ-IN™ Shielded
- Installs without the use of conduit indoors or outdoors in wet locations
- Direct burial rated

LINE VOLTAGE MONITOR



DIGITAL SINGLE-PHASE LINE VOLTAGE MONITOR

IICM492C



- Surge protection
- Easy view, backlit digital display
- Adjustable anti-short cycle time delay
- Universal line voltage input

TOGGLE SWITCH



30 AMP 600V 3-POLE TOGGLE SWITCH IN BLACK OR WHITE

LMS303DS (black) /
LMS303DSW (white)



- Use with heavy manufacturing equipment
- Made from impact-resistant PBT that withstands harsh environments
- 10-year limited warranty

ZoomLock™

The ZoomLock Advantage

FLAME-FREE REFRIGERANT FITTINGS

Increase productivity and profitability

ZoomLock™ flame-free refrigerant fittings are designed to:

- Work without brazing
- Joining copper tubes makes your job simpler and faster

Professionals who have tried ZoomLock flame-free refrigerant fittings report:

- Time and labor costs on tube connections are typically reduced 60% on average by eliminating the need for brazing

The biggest benefits to flame-free tube connecting are:

- More productivity and increased profit



FITTINGS



UNIBODY BALL VALVE INSULATION KIT

MA18567U	1/4" Flare	MA18570U	5/8" Flare
MA18568U	3/8" Flare	MA18652U	3/8" Flare X 1/4" Flare
MA18569U	1/2" Flare	MA18653U	5/8" Flare X 1/2" Flare



- Design Pressure / Maximum abnormal pressure: 775 psig, 53bar
- Continuous operating temperature: -40°F/300°F, -40°C/149°C
- Full port construction to match line size ID
- Internally equalized ball design
- Rupture-proof encapsulated stem with MCM seal technology



MINI-SPLIT PARTS & ACCESSORIES BROCHURE

CONDENSATE PUMPS • CONTROLS • TOOLS • PADS
MAINTENANCE • SUPPORTS • LINESET COVERS & FITTINGS
LINESET WIRE • REFRIGERANT FLEX LINES • ELECTRICAL

CALL FOR TECHNICAL SUPPORT AND TO PLACE YOUR ORDER TODAY

ARIZONA

GILBERT
(480) 824-4250

W PHOENIX
(623) 474-7200

GLENDALE
(602) 246-6982

PRESCOTT
(928) 759-0222

MESA
(480) 832-343

TUCSON
(520) 670-1100

NE PHOENIX
(480) 308-8200

YUMA
(928) 329-6420

S PHOENIX
(602) 438-8945

CALIFORNIA

ANAHEIM
(714) 520-0026

ANAHEIM
(714) 520-6440

AZUSA
(626) 969-1874

BAKERSFIELD
(661) 335-7200

CATHEDRAL CITY
(760) 770-6762

CHATSWORTH
(818) 341-5200

CHICO
(530) 893-2114

CULVER CITY
(310) 391-2291

DUBLIN
(925) 828-4875

EL CAJON
(619) 258-9382

FRESNO
(559) 538-6124

GILROY
(408) 846-6469

HAYWARD
(510) 782-9820

INDIO
(760) 775-7400

LANCASTER
(661) 945-6902

MANTECA
(209) 239-6446

NEWBURY PARK
(805) 376-3576

ONTARIO
(909) 982-9699

PASO ROBLES
(805) 434-3114

PITTSBURG
(925) 778-1237

POMONA
(909) 517-3810

RIVERSIDE
(951) 784-0506

N SACRAMENTO
(916) 924-8661

S SACRAMENTO
(916) 210-7993

SAN FERNANDO
(818) 364-9300

SAN GABRIEL
(626) 458-2432

SAN JOSE
(408) 271-1685

SAN LUIS OBISPO
(805) 549-0081

SAN RAFAEL
(415) 459-3798

SANTA CLARITA
(661) 287-3142

VAN NUYS
(818) 779-0894

VICTORVILLE
(760) 241-6284

NEVADA

LAS VEGAS
(702) 290-9388