



COMMERCIAL PRODUCTS

Bringing you the ultimate in commercial value!

PACKAGE AIR CONDITIONERS

2 - 5 Tons PAR5 - ENERGY STAR® - Up to 16.0 SEER, Up to 12.5 EER - 2 stage scroll compressor - High-efficiency ECM blower motor - Accessory filter racks support 2" filters - Hail guard tight-wire grille - 208/230 volts single and 3 phase	2.5 - 5 Tons PAD4 - Up to 14.0 SEER, 11.5 EER - Convertible airflow design - Scroll compressor - High-efficiency ECM blower motor - Accessory filter racks support 2" filters - 208/230 volts single and 3 phase, 460 volts	3 - 5 Tons RAV - 14.0 SEER - Up to 11.8 EER - Patented X-Vane Fan™ Technology - Std, med and high static fan motor options - Factory installed economizer option - Convertible airflow design - Scroll compressor - 2 stage cooling - 208/230 volts single and 3 phase, 460 volts	6 Tons RAV072 - 11.2 EER, 15.2 IEER - Patented X-Vane Fan™ Technology - Std, med and high static fan motor options - Factory installed economizer option - Convertible airflow design - Scroll compressor - 2 stage cooling - 208/230 volts single and 3 phase, 460 volts	3 - 5 Tons RAW - 16.0 SEER, 12.2 EER - Patented X-Vane Fan™ Technology - Std, med and high static fan motor options - Factory installed economizer option - Convertible airflow design - Scroll compressor - 2 stage cooling - 208/230 volts single and 3 phase, 460 or 575 volts	6 Tons RAH072 - ENERGY STAR - 13.2 IEER, 12.2 EER - Single-stage cooling - Std, med and high static fan motor options - Factory installed economizer option - Convertible airflow design - Scroll compressor - 208/230, 460 or 575 volts
6 - 12.5 Tons RAH073, RAH090, RAH102, RAH120, RAH150 - ENERGY STAR - 11.7 - 12.4 EER, Up to 16.2 IEER with VFD - 2 stage cooling - Std, med and high static fan motor options - Factory installed economizer option - Convertible airflow design - Dual scroll compressors - 208/230 volts 3 phase only, 460 or 575 volts	7.5 - 15 Tons RAS090, RAS102, RAS120, RAS150, RAS180 - Up to 11.3 EER, Up to 12.6 IEER - Std, med and high static fan motor options - Factory installed economizer option - Convertible airflow design - Dual scroll compressors - 2 stage cooling - 208/230 volts 3 phase only, 460 or 575 volts	7.5 - 10 Tons RAS089, RAS100, RAS119 - 11.2 EER, 12.9 IEER - 2 stage/single circuit cooling capacity - Std, med and high static fan motor options - Factory installed economizer option - Convertible airflow design - 208/230 volts 3 phase only, 460 or 575 volts	15, 17.5, 20, 25 Tons RAH181, RAH210, RAH240, RAH300 - ENERGY STAR - 11.4 - 12.2 EER, Up to 13.8 IEER - Dedicated vertical airflow - Std, med and high static fan motor options - Factory installed economizer option - Scroll compressors - 2 stage cooling with independent circuits and controls - 208/230 volts 3 phase only, 460 or 575 volts	15, 17.5, 20, 25 Tons RAH183, RAH213, RAH243, RAH303 - ENERGY STAR - 10.9 - 11.8 EER, Up to 13.5 IEER - Dedicated horizontal airflow - Std, med and high static fan motor options - Factory installed economizer option - Scroll compressors - 2 stage cooling with independent circuits and controls - 208/230 volts 3 phase only, 460 or 575 volts	15, 17.5, 20, 25 Tons RAS210, RAS240, RAS300, RAS336 - 10.0 - 11.0 EER, Up to 12.9 IEER - Dedicated vertical airflow - Std, med and high static fan motor options - Factory installed economizer option - Scroll compressors - 2 stage cooling with independent circuits and controls - 208/230 volts 3 phase only, 460 or 575 volts
15, 17.5, 20, 25 Tons RAS213, RAS243, RAS303, RAS333 - 10.0 - 11.0 EER - Dedicated horizontal airflow - Std, med and high static fan motor options - Factory installed economizer option - Scroll compressors - 2 stage cooling with independent circuits and controls - 208/230 volts 3 phase only, 460 or 575 volts	15, 17.5, 20, 25 Tons RGH073, RGH090, RGH102, RGH120, RGH150 - ENERGY STAR - 11.5 - 12.2 EER, Up to 16.0 IEER - 2 stage cooling - Std, med and high static fan motor options - Three heat options (low, medium, high) - Factory installed economizer option - Tubular heat exchanger - Convertible airflow design - Tubular heat exchanger - 2 stage gas heat - Dual scroll compressors - 208/230 volts 3 phase only, 460 or 575 volts	15, 17.5, 20, 25 Tons RGH181, RGH210, RGH240, RGH300 - ENERGY STAR - 11.2 - 12.0 EER, Up to 13.8 IEER - 81% AFUE - Dedicated vertical airflow - Tubular heat exchanger - Std, med and high static fan motor options - Three heat options (low, medium, high) - Factory installed economizer option - Scroll compressors - 2 stage cooling with independent circuits and controls - 208/230 volts 3 phase only, 460 or 575 volts	15, 17.5, 20, 25 Tons RGH183, RGH213, RGH243, RGH303 - ENERGY STAR - 10.5 - 11.5 EER, Up to 13.2 IEER - 81% AFUE - Dedicated horizontal airflow - Tubular heat exchanger - Std, med and high static fan motor options - Three heat options (low, medium, high) - Factory installed economizer option - Scroll compressors - 2 stage cooling with independent circuits and controls - 208/230 volts 3 phase only, 460 or 575 volts	15, 17.5, 20, 25 Tons RGS210, RGS240, RGS300, RGS336 - 9.8 - 10.8 EER, Up to 12.7 IEER - 80 - 81% AFUE - Dedicated vertical airflow - Tubular heat exchanger - Std, med and high static fan motor options - Three heat options (low, medium, high) - Factory installed economizer option - Scroll compressors - 2 stage cooling with independent circuits and controls - 208/230 volts 3 phase only, 460 or 575 volts	15, 17.5, 20, 25 Tons RGS213, RGS243, RGS303, RGS333 - 9.8 - 10.8 EER - 80 - 81% AFUE - Dedicated horizontal airflow - Tubular heat exchanger - Std, med and high static fan motor options - Three heat options (low, medium, high) - Factory installed economizer option - Scroll compressors - 2 stage cooling with independent circuits and controls - 208/230 volts 3 phase only, 460 or 575 volts

PACKAGE DUAL FUEL

2 - 5 Tons
PDS4, PDD4
- Up to 14.0 SEER
- 11.5 - 12.0 EER and 8.0 HSPF
- Dual Fuel - gas heat and electric heat pump
- Scroll compressor
- Convertible airflow design
- Stainless steel tubular heat exchanger (PDS4)
- Aluminized steel tubular heat exchanger (PDD4)
- Direct spark ignition
- High-efficiency ECM blower motor
- Accessory filter racks support 2" filters
- 208/230 volts single and 3 phase

COMMERCIAL AIR HANDLERS

6 - 30 Tons FAS072, FAS091, FAS120, FAS150, FAS180, FAS240, FAS300, FAS336 - AC fan coil - TXV standard - 4 row coil - Std, med and high static fan motor options - Painted or unpainted cabinet - Multi-position - 5 - 70 kW electric heat - 208/230/460 or 575 volts	6 - 20 Tons FHS072, FHS091, FHS120, FHS180, FHS240 - HP fan coil - TXV standard - 4 row coil - Std, med and high static fan motor options - Painted or unpainted cabinet - Multi-position - 5 - 70 kW electric heat - 208/230/460 or 575 volts
---	---

CASED COILS

7.5 & 10 Tons
CAHZ (Horizontal) CAVT (Vertical)
- Direct-expansion evaporator coils
- TXV
- 3/8" coil tubing
- Shipped with nitrogen holding charge

PACKAGE GAS/ELECTRICS

2 - 5 Tons PGR5 - ENERGY STAR - Up to 16.0 SEER, Up to 12.5 EER - 2 stage scroll compressor - 2 stage gas heat - Stainless steel tubular heat exchanger (PGS4) - High-efficiency ECM blower motor - Accessory filter racks support 2" filters - Hail guard tight-wire grille - 208/230 volts single and 3 phase	2.5 - 5 Tons PGS4, PGD4 - Up to 14.0 SEER, 11.5 EER - Scroll compressor - Convertible airflow design - Stainless steel tubular heat exchanger (PGS4) - Aluminized steel tubular heat exchanger (PGD4) - Direct spark ignition - High-efficiency ECM blower motor - Accessory filter racks support 2" filters - 208/230 volts single and 3 phase, 460 volts	3 - 5 Tons RGV - 14.0 SEER - Up to 11.6 EER - Std, med and high static fan motor options - Factory installed economizer option - Convertible airflow design - Scroll compressor - Single-stage cooling - 208/230 volts single and 3 phase, 460 volts	6 Tons RGV072 - 11.0 EER, 15.0 IEER - Patented X-Vane Fan™ Technology - Std, med and high static fan motor options - Factory installed economizer option - Convertible airflow design - Scroll compressor - 2 stage cooling - 208/230 volts single and 3 phase, 460 volts	3 - 5 Tons RGW - 16.0 SEER, up to 12.5 EER - Patented X-Vane Fan™ Technology - 2 stage gas heat - Std, med and high static fan motor options - Factory installed economizer option - Convertible airflow design - Scroll compressor - Single-stage cooling - 208/230 volts single and 3 phase, 460 and 575 volts	6 Tons RGH072 - ENERGY STAR - 13.0 IEER, 12.0 EER - Single-stage cooling - Std, med and high static fan motor options - Three heat options (low, medium, high) - Factory installed economizer option - Convertible airflow design - Tubular heat exchanger - 2 stage gas heat - Scroll compressor - 208/230, 460 or 575 volts
6 - 12.5 Tons RGH073, RGH090, RGH102, RGH120, RGH150 - ENERGY STAR - 11.5 - 12.2 EER, Up to 16.0 IEER - 2 stage cooling - Std, med and high static fan motor options - Three heat options (low, medium, high) - Factory installed economizer option - Tubular heat exchanger - Convertible airflow design - Tubular heat exchanger - 2 stage gas heat - Dual scroll compressors - 208/230 volts 3 phase only, 460 or 575 volts	7.5 - 15 Tons RGS090, RGS102, RGS120, RGS150, RGS180 - 10.8-11.1 EER, Up to 12.8 IEER - Std, med and high static fan motor options - Three heat options (low, medium, high) - Factory installed economizer option - Convertible airflow design - Tubular heat exchanger - 2 stage gas heat - Dual scroll compressors - 208/230 volts 3 phase only, 460 or 575 volts	7.5 - 10 Tons RGS089, RGS100, RGS119 - 11.0 EER, 12.7 IEER - 2 stage/single circuit cooling capacity - Std, med and high static fan motor options - Three heat options (low, medium, high) - Factory installed economizer option - Convertible airflow design - Tubular heat exchanger - 2 stage gas heat - 208/230 volts 3 phase only, 460 or 575 volts	15, 17.5, 20, 25 Tons RGH181, RGH210, RGH240, RGH300 - ENERGY STAR - 11.2 - 12.0 EER, Up to 13.8 IEER - 81% AFUE - Dedicated vertical airflow - Tubular heat exchanger - Std, med and high static fan motor options - Three heat options (low, medium, high) - Factory installed economizer option - Scroll compressors - 2 stage cooling with independent circuits and controls - 208/230 volts 3 phase only, 460 or 575 volts	15, 17.5, 20, 25 Tons RGH183, RGH213, RGH243, RGH303 - ENERGY STAR - 10.5 - 11.5 EER, Up to 13.2 IEER - 81% AFUE - Dedicated horizontal airflow - Tubular heat exchanger - Std, med and high static fan motor options - Three heat options (low, medium, high) - Factory installed economizer option - Scroll compressors - 2 stage cooling with independent circuits and controls - 208/230 volts 3 phase only, 460 or 575 volts	15, 17.5, 20, 25 Tons RGS210, RGS240, RGS300, RGS336 - 9.8 - 10.8 EER, Up to 12.7 IEER - 80 - 81% AFUE - Dedicated vertical airflow - Tubular heat exchanger - Std, med and high static fan motor options - Three heat options (low, medium, high) - Factory installed economizer option - Scroll compressors - 2 stage cooling with independent circuits and controls - 208/230 volts 3 phase only, 460 or 575 volts
15, 17.5, 20, 25 Tons RGS213, RGS243, RGS303, RGS333 - 9.8 - 10.8 EER - 80 - 81% AFUE - Dedicated horizontal airflow - Tubular heat exchanger - Std, med and high static fan motor options - Three heat options (low, medium, high) - Factory installed economizer option - Scroll compressors - 2 stage cooling with independent circuits and controls - 208/230 volts 3 phase only, 460 or 575 volts	3 - 5 Tons NH4H4 - Horizontal discharge with narrow footprint - 14.0-15.0 SEER depending on indoor combination*** - Scroll compressor - 208/230 volts single* and 3 phase, 460 volts	6 - 20 Tons CHS072, CHS091, CHS121, CHS180, CHS240 - Up to 11.0 EER - Scroll compressor - Single refrigerant circuit on CHS072, CHS091, CHS121 - Comfort Alert® diagnostics	3 - 5 Tons NX4H6 - Minimum 15.4 SEER, 8.2 HSPF - Hail guard tight-wire grille - Scroll compressor - 208/230 volts 3 phase	6 - 20 Tons N4H4 - 14.0 SEER - Scroll compressor - 208/230 volts single* and 3 phase, 460 volts	15 - 20 ton unit shown

SPLIT HEAT PUMPS

3 - 5 Tons NH4H4 - Horizontal discharge with narrow footprint - 14.0-15.0 SEER depending on indoor combination*** - Scroll compressor - 208/230 volts single* and 3 phase, 460 volts	6 - 20 Tons CHS072, CHS091, CHS121, CHS180, CHS240 - Up to 11.0 EER - Scroll compressor - Single refrigerant circuit on CHS072, CHS091, CHS121 - Comfort Alert® diagnostics
---	--

PACKAGE HEAT PUMPS

2 - 5 Tons PHR5 - ENERGY STAR - Up to 15.5 SEER, 12.5 EER - 2 stage scroll compressor - High-efficiency ECM blower motor - Accessory filter racks support 2" filters - Hail guard tight-wire grille - 208/230 volts single and 3 phase	2.5 - 5 Tons PHD4 - Up to 14.0 SEER - 12.0 EER and 8.0 HSPF - Scroll compressor - Convertible airflow design - High-efficiency ECM blower motor - Accessory filter racks support 2" filters - 208/230 volts single and 3 phase, 460 volts	3 - 5 Tons RHV - 14.3 SEER, 11.8 EER - New X-Vane Fan™ Technology - Scroll compressor - Single-stage cooling - Std, med and high static fan motor options - Factory installed economizer option - Convertible airflow design - 208/230, 460 or 575 volts	6 Tons RHV072 - 15.0 IEER, 11.2 EER - Patented X-Vane Fan™ Technology - 2-stage scroll compressor - Std, med and high static fan motor options - Factory installed economizer option - Convertible airflow design - 208/230, 460 or 575 volts, single and 3 phase	3 - 5 Tons RHW R, up to 12.5 EER & 8.3 HSPF - Patented X-Vane Fan™ Technology - 2 stage cooling - 2 stage scroll compressor - Std, med and high static fan motor options - Factory installed economizer option - Convertible airflow design - 208/230, 460 or 575 volts, single and 3 phase	6 Tons RHH072 - 12.8 IEER, 12.0 EER - Single-stage cooling - Std, med and high static fan motor options - Factory installed economizer option - Convertible airflow design - Scroll compressor - 208/230, 460 or 575 volts
6 - 10 Tons RHH073, RHH090, RHH102, RHH120 - ENERGY STAR - Up to 12.3 EER, 12.9 - 15.6 IEER - 2 stage cooling - Std, med and high static fan motor options - Factory installed economizer option - Convertible airflow design - Dual scroll compressors - 2 stage cooling - 208/230 volts 3 phase only, 460 or 575 volts	7.5 - 8.5 Tons RHS090, RHS102 - 11.2 EER, 12.5 IEER - Std, med and high static fan motor options - Factory installed economizer option - Convertible airflow design - Dual scroll compressors - 2 stage cooling - 208/230 volts 3 phase only, 460 or 575 volts	10 - 12.5 Tons RHS120, RHS150 - 10.6 - 11.0 EER, 12.0 - 12.5 IEER - Std, med and high static fan motor options - Factory installed economizer option - Convertible airflow design - Dual scroll compressors - 2 stage cooling - 208/230 volts 3 phase only, 460 or 575 volts	15 & 20 Tons RHS181, RHS240 - 10.6 - 10.8 EER, 12.0 IEER - Dedicated vertical airflow - Std, med and high static fan motor options - Factory installed economizer option - Scroll compressors - 2 stage cooling with independent circuits and controls - 208/230 volts 3 phase only, 460 or 575 volts	15 & 20 Tons RHS183, RHS243 - 10.6 - 10.8 EER - Dedicated horizontal airflow - Std, med and high static fan motor options - Factory installed economizer option - Scroll compressors - 2 stage cooling with independent circuits and controls - 208/230 volts 3 phase only, 460 or 575 volts	15 ton unit shown

SPLIT CONDENSING UNITS

3 - 5 Tons NH4A4 - Horizontal discharge with narrow footprint - 14.0-15.0 SEER depending on indoor combination*** - Scroll compressor - 208/230 volts single* and 3 phase, 460 volts	2.5 - 5 Tons N4A3 - 13.0 SEER - Scroll compressor - 208/230 volts single* and 3 phase, 460 or 575 volts
6 Tons CAS072 - 11.5 EER - Scroll compressor - Comfort Alert® diagnostics - Low-ambient control option (-20° F) - 208/230 volts 3 phase only, 460 or 575 volts	7.5 - 12.5 Tons CAS091, CAS121, CAS151 - Up to 11.2 EER - Scroll compressor - Single refrigerant circuit - Comfort Alert® diagnostics - Low-ambient control option (-20° F) - 208/230 volts 3 phase only, 460 or 575 volts
10 - 12.5 Tons CAS120, CAS150 - 11.2 EER - Dual scroll compressors - Comfort Alert® diagnostics - Low-ambient control option (-20° F) - 208/230 volts 3 phase only, 460 or 575 volts	15 & 20 Tons CAS180, CAS181, CAS240, CAS241 - 11.0 EER - Scroll compressor - Single or dual refrigerant circuit - Comfort Alert® diagnostics - Low-ambient control option (-20° F) - 208/230 volts 3 phase only, 460 or 575 volts

PAR5, PAD4, PGR5, PGD4, PGS4, PHR5, PHD4 - Cabinet air leakage of 2.0% or less at 0.5 in. W.C. when tested in accordance with ASHRAE standard 193. Factory installed option available for low cabinet air leakage and tin-coated copper evaporator main tubes.

RAS, RGS, RHS with VFDs comply with the U.S. Department of Energy (DOE) efficiency standard of 2018. RGH 10, 17.5, 20, 25 ton units and RAH 10 ton units for installation in the United States contain use of 2-speed indoor fan control system. RAS, RGS, RHS, RAH, RGH, RHH units for installation outside the United States may or may not contain use of the 2-speed indoor fan control system as they are not required to comply with the U.S. Department of Energy (DOE) efficiency standard of 2018.

* Single-phase split-system units are subject to the DOE Regional Efficiency Standards. ** Comfort Alert® is a registered trademark of Emerson Climate Technologies, Inc. *** For information regarding furnace or fan coil options that can increase the energy efficiency of selected Day & Night air conditioners (SEER and EER) and heat pumps (SEER, EER and HSPF), refer to www.GoDayandNight.com/Product Information/Higher SEER and HSPF. Factory installed options (FIOPs) are available on select models of Day & Night® package rooftops. A full line of commercial accessories is available. See your Day & Night sales representative for availability. Day & Night® commercial products are covered by the following parts-only limited warranties: - Stainless Steel Heat Exchanger - 15 Yrs. (RGH & RGS models only) - Aluminized Steel Heat Exchanger - 10 Yrs. - Compressor - 5 Yrs. (unless otherwise indicated) - Parts - 1 Yr. Optional extended warranty available on all R series models and commercial splits 6 tons and above (available in the U.S. only).

© 2020 International Comfort Products. Part No. 4014460204. Printed 8/20. See www.GoDayandNight.com for the most current and complete warranty certificate and further details. Illustrations and photographs are only representative. Some product models may vary. As part of its commitment to quality, International Comfort Products reserves the right to change specifications on its products without notice.

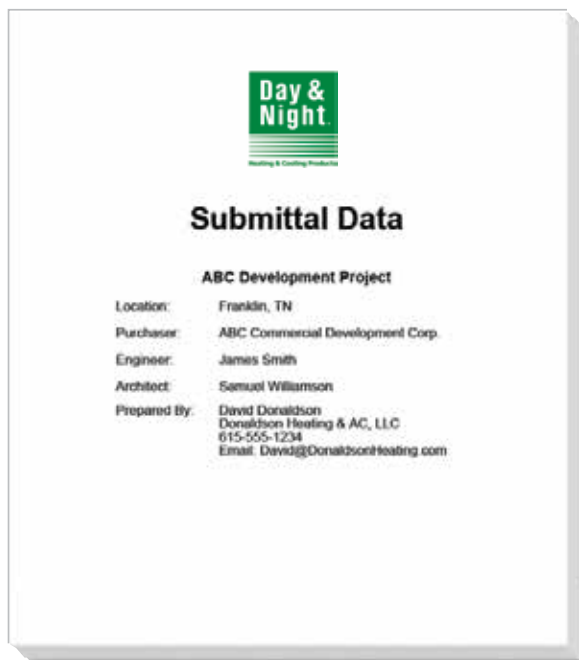
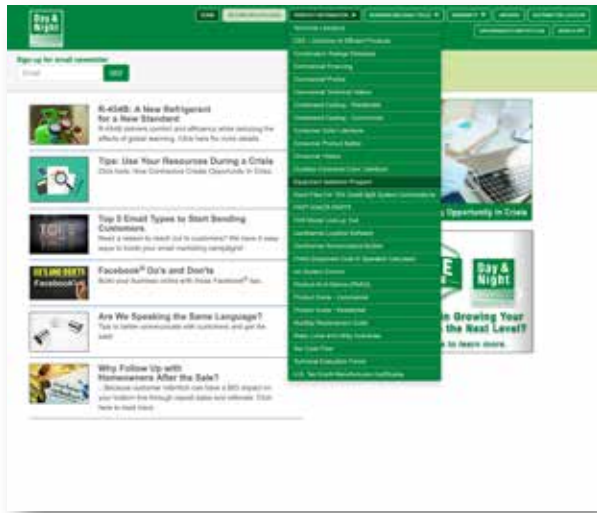
A SIMPLER WAY TO CREATE CUSTOMIZED SUBMITTALS:



Online Equipment Selection Program!

Use the **Equipment Selection Program** website to create submittals for engineers, code officials, builders or property owners or to quickly configure a unit for quoting purposes. It guides you through the process of selecting the right equipment for every application, based on the criteria you enter, matching the best products, factory installed options and correct accessories for every job.

Plus you can create a **complete professional presentation** in PDF or Word format with a customized appearance (left). Then you can print, email or save order lists to be used or revised at a later date, which allows you to provide engineers as many copies as they need without any hassle. You can also generate equipment schedules in Microsoft® Excel® format.



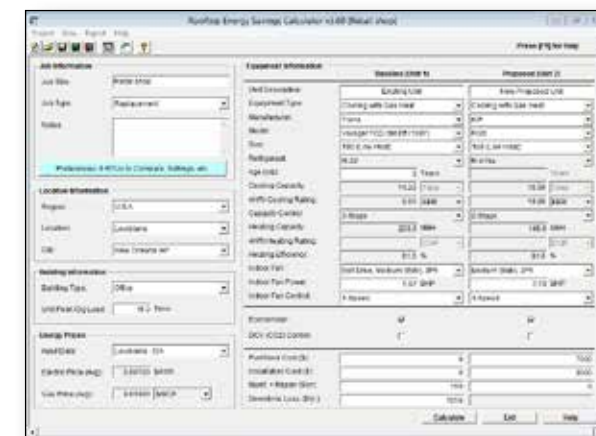
It's easy to get started with the ESP website. All you need to do is register at GoDayandNight.com by clicking on **Product Information > Equipment Selection Program**. Or, go to www.icpeqp.com.

Just fill out the online form and follow the instructions and you'll be on your way to simplifying the submittal process!



Rooftop Energy Savings Calculator

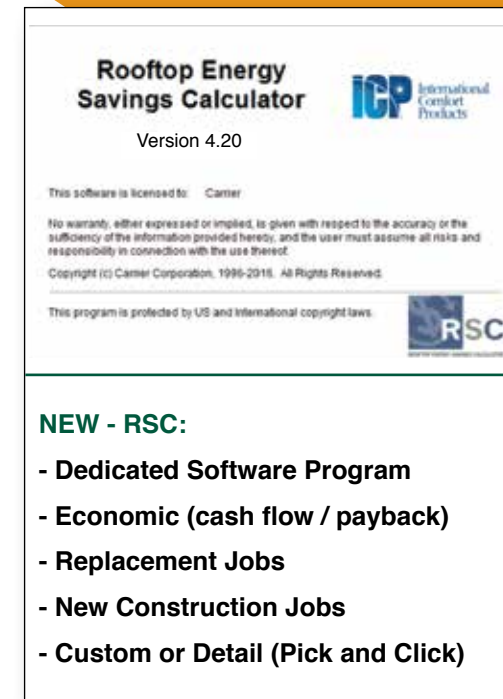
- Compare energy costs and payback performance of rooftop equipment. Preloaded with the most commonly called out competitor models.
- For replacement applications
 - Evaluate the energy cost savings and payback of replacing old, inefficient equipment
- For new construction applications
 - Helps evaluate the energy cost and payback performance of standard vs. high-efficiency equipment or competitor equipment
- Available on HVACPartners under “Products and Solutions”
- It's **FREE!** - Available on the GoSite with your Dealer Login



- Simple inputs
- Auto-populates if replacement or new construction
- Simulates 8 building types
- Pulls current energy data – no guessing
- Uses Hourly Analysis Program (HAP) calculation engine
- Intuitive help screens

Calculates Professional Reports:

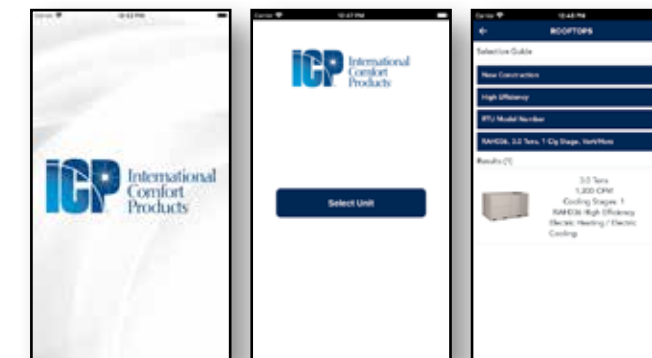
- Payback Period
- Maintenance, Repair Costs
- Total Energy Savings
- Graphic Displays
- Detailed Energy Savings:
 - Fan
 - Cooling
 - Heating
- Savings After Payback Period



Get the ICP® RTU Mobile App on Your Smartphone

The ICP® Rooftops app allows users to perform on the spot selection of HVAC rooftop units for both replacement and new construction, and estimate energy savings between ICP® Standard and High-Efficiency units. Users can input an existing unit model number for Day & Night or competitive equipment, or desired unit specifications, and obtain the optimal Day & Night model for their requirements.

- Provides size, weight, base electrical data
- Select units by model, size, or CFM



Available on:
 Apple® iOS 13.0 and above
 Android™ 4.4 and above
 Smartphones and Tablets



Search the APP store on your mobile device, Click and Download:

Google Play Store – <https://play.google.com/store/apps/details?id=com.carrier.icprooftops>

iPhone – <https://apps.apple.com/us/app/icp-rooftops-for-iphone/id1096805695#?platform=iphone>

Android and Google Play are trademarks of Google Inc., registered in the U.S. and other countries. Apple, iOS and the Apple logo are trademarks of Apple Inc., registered in the U.S. and other countries. App Store is a service mark of Apple Inc. Microsoft is a registered trademark of Microsoft Corporation in the United States and/or other countries.

