



**ENDURING PERFORMANCE**  
for the **MULTI-FAMILY MARKET**



**TOUGHER • QUIETER • EASIER TO SELL**  
**EASIER TO INSTALL • EASIER TO SERVICE**

**AIR CONDITIONERS:** Footprints as small as 23" x 23" & all R-410A refrigerant



**N4A7**  
• Up to 17 SEER depending on indoor combination\*  
• Hail guard tight-wire grille  
• 2 - 5 tons  
• 2-stage scroll compressor

**NXA6/N4A6**  
• Up to 17 SEER with ECM indoor section motor\*  
• Up to 15 SEER with PSC indoor section motor\*  
• Hail guard tight-wire grille  
• 1½ - 5 tons  
• Scroll compressor

**NXA4/N4A5**  
• 14-15 SEER depending on indoor combination\*  
• Hail guard tight-wire grille  
• 1½ - 5 tons  
• Scroll compressor

**N4A4\*\*C**  
• 14 SEER depending on indoor combination\*  
• 1½ - 5 tons  
• Scroll compressor  
• Coastal model

**N4A3**  
• 13-14 SEER depending on indoor combination\*  
• 1½ - 5 tons  
• Scroll compressor



**R4A4/R4A5**  
• 14-15 SEER depending on indoor combination\*  
• 1½ - 5 tons  
• Scroll compressor

**R4A3**  
• 13-14 SEER depending on indoor combination\*  
• 2 - 5 tons  
• Scroll compressor  
• Coastal model available



**NH4A4**  
• Horizontal discharge with narrow footprint  
• 14-15 SEER depending on indoor combination\*  
• 1½ - 5 tons  
• Scroll compressor



**NXH6**  
• Up to 17.5 SEER with ECM indoor section motor\*  
• Hail guard tight-wire grille  
• 2 - 5 tons  
• Scroll compressor

**NXH5**  
• Up to 15.5 SEER with ECM indoor section motor\*  
• Up to 14 SEER with PSC indoor section motor\*  
• Hail guard tight-wire grille  
• 1½ - 5 tons  
• Scroll compressor

**N4H6**  
• Up to 17.5 SEER depending on indoor combination\*  
• Hail guard tight-wire grille  
• 2 - 5 tons  
• 2-stage scroll compressor

**N4H4**  
• 14-15 SEER depending on indoor combination\*  
• Hail guard tight-wire grille  
• 1½ - 5 tons  
• Scroll compressor  
• Coastal model available



**R4H4**  
• 14-15 SEER depending on indoor combination\*  
• 1½ - 5 tons  
• Scroll compressor



**NH4H4**  
• Horizontal discharge with narrow footprint  
• 14-15 SEER depending on indoor combination\*  
• 1½ - 5 tons  
• Scroll compressor

**GAS FURNACES:** All 4-way multi-position



**N95ESN**  
• Up to 96% AFUE  
• 26 - 140 MBTUh  
• Single-stage heat  
• FCT ECM blower motor  
• 1-pipe or 2-pipe venting  
• Low NOx



**R80ESN**  
• 80% AFUE  
• 44 - 154 MBTUh  
• FCT ECM blower motor  
• 33.3 inches tall  
• Single-stage heat  
• Low NOx models available



**R95ESN**  
• Up to 96% AFUE  
• 60 - 120 MBTUh  
• Single-stage heat  
• FCT ECM blower motor  
• 1-pipe or 2-pipe venting  
• Low NOx



**R92ESN**  
• Up to 92.1% AFUE  
• 60 - 120 MBTUh  
• Single-stage heat  
• FCT ECM blower motor  
• 1-pipe or 2-pipe venting  
• Low NOx

**COILS**



**END4X**  
• 1½ - 5 tons  
• N-Coil  
• Upflow or downflow  
• Aluminum tubes and fins with copper stubs  
• R-410A TXV



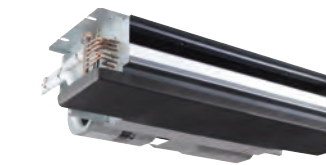
**ENH4X**  
• 2 - 5 tons  
• N-Coil  
• Horizontal  
• Aluminum tubes and fins with copper stubs  
• R-410A TXV

**FAN COILS**



**FMA4P**  
• 1½ - 3 tons  
• Piston  
• PSC blower motor  
• Free return air – front or bottom  
• Straight cool combinations

**FMA4X**  
• 1½ - 3 tons  
• TXV  
• ECM blower motor  
• Free return air – front or bottom  
• 14 SEER combinations



**FMC4Z, FMU4Z**  
• 1½ - 3 tons  
• Piston  
• ECM blower motor  
• Ceiling mount  
• Cased & uncased available  
• Accessory Louver Panel/Filter Rack available  
• Accessory Access Panel available  
• Straight cool combinations  
• 15 SEER combinations



**FEM4P (Piston) FEM4X (TXV)**  
• 1½ - 4 tons (piston)  
• 1½ - 5 tons (TXV)  
• ECM blower motor  
• 4-position installation

**FM(C,U)4X**  
• 1½ - 2½ tons  
• TXV  
• PSC blower motor  
• Ceiling mount  
• Cased & uncased available  
• Accessory Louver Panel/Filter Rack available  
• Accessory Access Panel available  
• 14 SEER combinations

\*For information regarding furnace or fan coil options that can increase the energy efficiency of selected Day & Night air conditioners (SEER and EER) and heat pumps (SEER, EER and HSPF), refer to [www.GoDayandNight.com/Product Information/Higher SEER and HSPF Combinations](http://www.GoDayandNight.com/Product Information/Higher SEER and HSPF Combinations).

ENERGY STAR® and associated logos are registered trademarks of the U.S. Environmental Protection Agency.

# TOUGH. VERSATILE. EFFICIENT. COMPETITIVE.

Day & Night® Heating & Cooling Products are a tough HVAC product line that dealers can trust to deliver enduring, rugged performance. They're backed by a decades-long heritage of products that generations of homeowners have counted on for their home comfort needs.

Now, Day & Night products include a full-range of multi-family housing systems built on that heritage and designed specifically for the unique challenges of multi-family housing construction. These products include:

- Split-system air conditioners and heat pumps with footprints as small as 23" x 23" and Seasonal Energy Efficiency Ratios (SEER) up to 17.
- Fan coils designed for the unique space limitations of apartments and condominiums.
- Compact gas furnaces that are just 33 to 35 inches tall with Annual Fuel Utilization Efficiencies (AFUE) up to 95.5 percent.

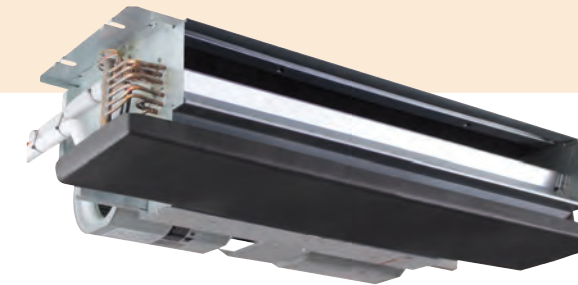
“...designed to help you stake out a strong position in the expanding multi-family housing market.”

## Whether you sell a few units at a time or a few hundred...

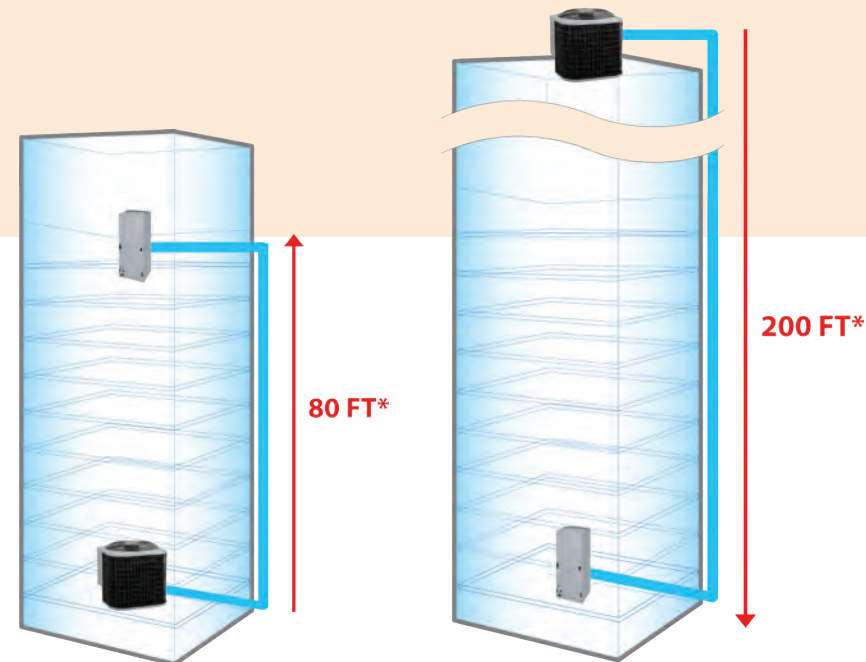
Check out the growing line-up of Day & Night home comfort systems designed to help you stake out a strong position in the expanding multi-family housing market.

### A Careful Balance of Efficiency and Affordability

With smaller diameter linesets in many systems, this Day & Night product line helps you achieve a lower cost than many competitors. With efficiencies up to 17 SEER and 96% AFUE, Day & Night systems help you create customized solutions that offer a careful balance of energy efficiency and total system cost.



FM(C,U)4Z Fan Coil  
FM(C,U)4X Fan Coil



\* Note: Maximum lineset length, evaporator above condenser (see Longline Guide for requirements).

\* Note: Maximum lineset length, condenser above evaporator (see Longline Guide for requirements).

### Vertical Separation Capabilities

This Day & Night product line gives you excellent application flexibility with long-run capabilities to handle condenser-higher with runs up to 200 feet and condenser-lower runs up to 80 feet.

### AHRI Certified

The AHRI Product Performance Certification Program is a voluntary program, administered and governed by AHRI, which ensures that various types of heating, ventilation, and air conditioning products perform according to manufacturers' published claims. Products that are certified through the AHRI Program are continuously tested, at the direction of AHRI, by an independent third-party laboratory, contracted by AHRI, to determine the product's ability to conform to one or more product rating standards or specifications. The program assures buyers that manufacturers produce products with consistently valid ratings, thus enhancing buyer confidence in the performance of participating manufacturers' products and discouraging the marketing of products with invalid ratings.



## Backed by MAXIMUM STRENGTH WARRANTIES

Every Day & Night home comfort product is backed the way it's built – to be the best. How do you know for sure? Warranty coverage. Maximum Strength warranty coverage.

When used in a residential application (for example: apartments, rental properties, etc.), the following warranty terms apply:

Product	Model Family	Parts (including compressor)	Heat Exchanger
Condenser	N4A7, NXA6/N4A6, N4A3, NXA4/N4A5, R4A3, R4A4/R4A5, N4H6, NXH6, NXH5, N4H4, R4H4, NH4A4, NH4H4, N4A4	10 years	n/a
Gas Furnace	N95ESN, R95ESN, R92ESN, R80ESN	10 years	20 years
Fan Coil	FEM4, FMA, FM(C,U)	10 years	n/a
Evaporator Coil	EN	10 years	n/a

Warranties are non-transferrable to subsequent owners. Please see warranty certificates for further details and restrictions.



© 2019 International Comfort Products

This summary information is correct at time of publication; please check specification sheets for complete and most up-to-date details. Illustrations and photographs are only representative. Some product models may vary. As part of its commitment to quality, International Comfort Products reserves the right to change specifications on its products without notice.

Part No. 40144710105 Printed 6/19