

EliteULTRA

Highly Efficient Condensing Boiler & Combi Units



DURABLE HEATING - BOILER & COMBI UNITS

Boiler Firing Rates: 85,000, 120,000, 150,000, 199,000 Btuh

Combi Firing Rates: 120,000, 150,000, 199,000 Btuh

Condensing technology with a new and patented XtraTech Stainless Steel Heat Exchanger, ensuring many years of reliable performance

ABSOLUTE EFFICIENCY

Up to 96% AFUE while using an outdoor sensor (included)

Up to 11:1 turndown ratio limits short cycling and provides more efficient energy consumption

Built-in automatic bypass eliminates expensive primary / secondary piping

Equipped with a built-in highly efficient ECM Pump

WHISPER QUIET OPERATION

Thanks to a pump and combustion fan with insulating panels

EASY TO USE INTERFACE

LCD display with digits, symbols, and an intuitive menu to set the desired temperature, activate functions, and even manage different heating zones

COMBI BOILER: FULL COMFORT SETTING

Domestic hot water preheat function for instant hot water

SMART CONNECTIVITY WITH HTP LINK

The Elite Ultra is always at your fingertips with WiFi on board, allowing the boiler and its many system parameters to be monitored remotely

Set up real-time service and maintenance notifications to ensure that the unit is regularly monitored, or if professional assistance is recommended

EASY TO SERVICE WITH QUICK SNAP COMPONENT AND SENSOR CONNECTIONS

FIFTEEN (15) YEAR LIMITED WARRANTY

FLOOR AND WALL MOUNT MODELS AVAILABLE



ELU-85 - 120 Boiler and
120 - 150 Combi Model Shown



ELU-150 - 199 Boiler and 199 Combi
Floor Mount ("FLKT") Model Shown

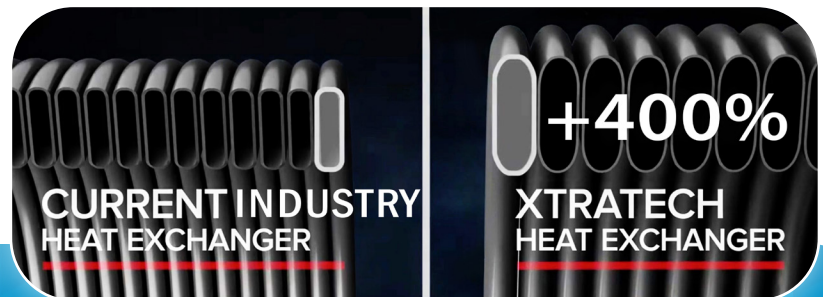
SUSTAINABLE COMFORT FOR EVERYONE

 **ARISTON**
GROUP

XtraTech Heat Exchanger The Heart of Our Design



Up to 400% Larger Pipe Surface Area Versus Conventional Designs Ensures Extremely Low Pressure Drop with High Performance



XTRATECH™ HEAT EXCHANGER

The Heart of Our Heating
Condensing Technology

XtraTech Stainless Steel Heat Exchanger

High Grade Stainless Steel

- Ensures maximum quality at the heart of the boiler
 - Resists corrosion to guarantee reliability for years to come
- Innovative Heat Exchanger Design
- Increases water flow, creating more internal turbulence
 - This turbulence acts as a scrub on the internal walls, reducing heat exchanger deposits and ensuring a longer lifetime for your boiler

HTP LINK

You're in Control - Wherever You Are*

With HTP Link, you and trusted service personnel can:

- Remotely view boiler parameters and status, ensuring proper operation and maximum efficiency.
- Receive boiler text and e-mail updates, alerting service personnel of possible issues.
- Access the boiler and troubleshoot issues without having to be onsite, reducing costly service calls.



*HTP Link Available on All Models