



2025 QUICK REFERENCE BROCHURE



Engineered for Comfort®



ABOUT DURASTAR

Durastar® is committed to providing products engineered for comfort, backed by resilient technology and tested to withstand the rigors of time and the natural elements. We provide energy-efficient heating and air conditioning to create comfortable environments suitable for all.

THE DURASTAR DIFFERENCE-MAKERS



QUALITY CONSTRUCTION

Our products are created with sturdy, high-quality materials to withstand harsh environments year after year.



VALUE-FRIENDLY

We're proud to offer efficient and reliable HVAC equipment without sacrificing affordability.



RELIABLE COMFORT

Our products undergo strict testing to maximize reliability and consistent performance in even the toughest conditions.



TABLE OF CONTENTS

NOMENCLATURE

Nomenclature	5
--------------------	---

UNITARY EQUIPMENT

Air Conditioners	14
Heat Pumps	16
Gas Furnaces	18
Coils	21
Air Handlers	22
Crossover Heat Pumps	26

MINI-SPLITS

Outdoor Units

Sirius Heat	30
Single and Multi-Zone	31

Indoor Units

Wall Mounted	32
Slim Ducted	33
Multi-Positional Air Handlers	33
One-Way Ceiling Cassettes	34
Four-Way Ceiling Cassettes	34
Floor Mounted	35
Floor/Ceiling Mounted	35

PACKAGED TERMINAL AIR CONDITIONERS

PTACs	39
PTHPs	39

ROOM AIR

Window	41
Casement	41
Through the Wall	42

REFERENCES

Glossary of Terms	44
Warranty	45
Ductless Single Zone Compatibility Chart	46–47



DURASTAR A2L REFRIGERANT TRANSITION

As part of the industry-wide transition created by the 2020 American Innovation & Manufacturing (AIM) Act, Durastar products began transitioning to A2L classified refrigerants (R-454B and R-32) in 2024.

What is the AIM Act?

Hydrofluorocarbons (HFCs) are potent greenhouse gases that are linked to increasing global warming at a significantly higher rate than carbon dioxide.

HFCs are used in many applications, including air conditioning. The AIM Act grants the U.S. Environmental Protection Agency (EPA) the authority to regulate HFCs and seeks to reduce these substances through three primary ways:

- Phase down production and consumption – Reduce 85% of annual HFC production and consumption by 2036
- Regulate HFCs and substitutes – EPA can establish requirements for managing HFCs and their substitutes in equipment, such as air conditioners, heat pumps, etc.
- Transition to next-generation technologies – New technologies will address the restrictions on the use of HFCs in sectors such as refrigeration, air conditioning, heat pumps, foams, and aerosols, aiming to achieve climate protection goals.

Why A2L?

The AIM Act's transition to next-generation technologies aims to shift certain sectors and subsectors to using HFC substitutes with a lower global warming potential (GWP). This transition includes replacing traditional refrigerants used in the HVAC industry with A2L classified refrigerants, which offer lower GWP values and other environmental benefits.

A2L is a classification of the toxicity and flammability of refrigerants: "A" meaning "lower toxicity" and "2L" meaning "lower burning velocity". While A2Ls are still relatively low flammability and difficult to ignite, they are slightly flammable, and that is why refrigerant detection systems (RDS) are necessary depending on the unit and application.

Durastar's RDS Position

Durastar takes safety as its highest priority and is an industry leader in refrigerant detection system (RDS) sensor placement. We strive to take the guess-work out of when to install RDS sensors by including factory installed sensors in all necessary applications. In turn, making the installation simpler and lowering labor costs.

Important Updates

On Jan. 1, 2025, products containing the high-GWP HFCs will officially be prohibited to manufacture or import. Products containing R410A are authorized for sale and installation until Jan. 1, 2026. After that date R-410A products manufactured prior to Jan. 1, 2025 and R-410A products labeled "For Service Only" can be used for replacement components and servicing.

NOMENCLATURE

Durastar products adhere to consistent nomenclature conventions to maximize accuracy while ordering.



NOMENCLATURE

AIR CONDITIONERS

	D	R	A	C	1	3	B	1	8	A	J	1	N	N	A
Brand DR: Durastar															
Product Category AC: AC ACS: Small Chassis AC															
SEER2 13: 13.4 SEER2 14: 14.3 SEER2 15: 15.2 SEER2															
Refrigerant A: R-410A B: R-454B															
Capacity 18: 1.5T 42: 3.5T 24: 2.0T 48: 4.0T 30: 2.5T 60: 5.0T 36: 3.0T															
Major Series A: 1st Design															
Voltage J: 208-230/1/60															
Type 1: Single Stage 3: 3+ Stage															
Region A: All Regions N: North															
Controls N: Non-Communicating															
Minor Series A: 1st Design															

HEAT PUMPS

	D	R	H	P	1	4	B	3	6	A	J	2	A	N	A
Brand DR: Durastar															
Product Category HP: HP HPS: Small Chassis HP															
SEER2 14: 14.3 SEER2 15: 15.2 SEER2															
Refrigerant A: R-410A B: R-454B															
Capacity 18: 1.5T 42: 3.5T 24: 2.0T 48: 4.0T 30: 2.5T 60: 5.0T 36: 3.0T															
Major Series A: 1st Design															
Voltage J: 208-230/1/60															
Type 1: Single Stage 2: Dual Stage															
Region A: All Regions															
Controls N: Non-Communicating															
Minor Series A: 1st Design															

COILS

	D	R	B	E	F	2	4	1	4	S	T	A	A	M	C
Brand DR: Durastar															
Refrigerant A: R-410A B: R-454B															
Product Category E: Evap Coil															
Type F: Furnace Coil															
Capacity 18: 1.5T 42: 3.5T 24: 2.0T 48: 4.0T 30: 2.5T 60: 5.0T 36: 3.0T															
Width 14: 14" 17: 17.5" 21: 21" 24: 24.5"															
Efficiency S: Standard M: Mid															
Metering T: TXV															
Major Series A: 1st Design															
Coil Series A: A-Coil N: N-Coil															
Orientation M: Multi-positional															
Coil Series C: Cased															

FURNACE

	D	R	8	0	M	4	A	T	0	4	0	2	3	1	4	S	A	J
Brand DR: Durastar																		
Furnace Efficiency 80: 80% AFUE 95: 95% AFUE 96: 96% AFUE																		
Position M4: Multi-4 Way DZ: Downflow Zero Clearance UH: Upflow Horizontal																		
Major Series A: 1st Design B: 2nd Design C: 3rd Design																		
Motor Type T: Constant Torque W: Variable Speed																		
Heating Input 040: 45K BTUH 085: 85K BTUH 050: 50K BTUH 100: 100K BTUH 060: 60K BTUH 115: 115K BTUH 070: 70K BTUH 125: 125K BTUH 075: 75K BTUH 150: 150K BTUH																		
Stages of Heating 1: Single Stage 2: Two Stage																		
AC Max Capacity 3: 3 Ton Drive 4: 4 Ton Drive 5: 5 Ton Drive																		
Width 14: 14" 21: 21" 17: 17.5" 24: 24.5"																		
NOX S: Standard N: Low NOx U: Ultra Low NOx																		
Minor Series A: 1st Series B: 2nd Series																		
Controls B: Communicating, Bluetooth® J: Communicating, No Bluetooth® N: Non-Communicating																		

NOMENCLATURE

AIR HANDLERS

	D	R	A	H	2	T	B	2	4	1	7	A	S	T	N	N	J
Brand DR: Durastar																	
Product Category AH: Multi-Positional Air Handler																	
Stages of Airflow 1: 1-Stage 2: 2-Stage																	
Motor Type T: Constant Torque																	
Refrigerant A: R-410A B: R-454B																	
Capacity 18: 1.5T 42: 3.5T 24: 2.0T 48: 4.0T 30: 2.5T 60: 5.0T 36: 3.0T																	
Width 17: 17.5" 21: 21" 24: 24.5"																	
Major Series A: 1st Design																	
Efficiency S: Standard M: Mid																	
Metering T: TXV																	
Coil Series A: A-Coil N: N-Coil																	
Controls N: Non-Communicating																	
Voltage A: 115/1/60 J: 208-240/1/60																	

FRONT RETURN AIR HANDLERS

	D	R	F	2	T	B	2	4	2	1	A	S	T	S	N	J	N	O	F
Brand DR: Durastar																			
Product Category F: Front Return																			
Stages of Airflow 1: 1-Stage 2: 2-Stage																			
Motor Type P: PSC T: Constant Torque																			
Refrigerant A: R-410A B: R-454B																			
Capacity 18: 1.5T 30: 2.5T 24: 2.0T 36: 3.0T																			
Width 21: 21" 24: 24.5"																			
Major Series A: 1st Design																			
Efficiency S: Standard																			
Metering T: TXV																			
Coil Series S: Slab																			
Controls N: Non-Communicating																			
Voltage J: 208-240/1/60																			
Disconnect B: Breaker N: None																			
Factory Heat 0: No Heat 8: 8 KW 3: 3 KW 1: 10 KW 5: 5 KW																			
Option Code F: Float Switch																			

DUCTLESS AND SIDE DISCHARGE HEAT PUMPS

	D	R	A	1	U	0	9	S	2	A
Brand										
DR: Durastar										
Communication Type										
A: Current Loop (IDU powered from ODU)										
U: 24V/RS-485 (IDU and ODU powered separately)										
# of Supported IDU Connections										
Equipment Type										
U: Outdoor Heat Pump										
H: Sirius Heat										
Nominal Capacity (BTU)										
06: 6,000 30: 30,000 55: 55,000										
09: 9,000 33: 33,000 60: 60,000										
12: 12,000 36: 36,000										
18: 18,000 42: 42,000										
24: 24,000 48: 48,000										
28: 28,000 49: 48,000										
Zone Compatibility										
M: Multi-Zone										
S: Single Zone										
Major Generation										
1: R-410A Refrigerant										
2: R-454B Refrigerant (A2L)										
Minor Generation										
A: First Generation										
B: Second Generation										

DUCTLESS AND SIDE DISCHARGE

	D	R	A	W	0	9	F	2	A	
Brand										
DR: Durastar										
Communication Type										
A: Current Loop (IDU powered from ODU)										
U: 24V/RS-485 (IDU and ODU powered separately)										
Equipment Type										
C: Four-Way Cassette										
DL: Low Static Slim Ducted										
DH: High Static Slim Ducted										
F: Floor/Ceiling Flex										
L: One-Way Cassette										
M: Multi-Positional Air Handler										
S: Floor Mounted										
W: Wall Mounted										
Nominal Capacity or Capacity Range (BTU)										
06: 6,000 0612: 6,000 – 12,000										
09: 9,000 0912: 9,000 – 12,000										
12: 12,000 1824: 18,000 – 24,000										
16: 16,000 3036: 30,000 – 36,000										
18: 18,000 4260: 42,000 – 60,000										
24: 24,000										
33: 33,000										
Zone Compatibility										
F: Free Match (Single or Multi-Zone)										
M: Multi-Zone										
S: Single Zone										
Major Generation										
1: R-410A Refrigerant										
2: R-454B Refrigerant (A2L)										
Minor Generation										
A: First Generation										
B: Second Generation										

NOMENCLATURE

ROOM AIR

	D	R	W	A	C	0	8	1	X	N	A	1
Brand DR: Durastar												
Equipment Type W: Window C: Casement T: Through the Wall												
Air Type AC: Cooling Only HC: Heating/Cooling												
Nominal Cooling BTUs 08: 8,000 10: 10,000 12: 12,000 14: 14,000 18: 18,800 23: 23,200												
Voltage 1: 110-115V 2: 208-230V												
Refrigerant X: R-32												
Efficiency N: Normal												
Major Generation A: First Generation												
Minor Generation 1: First Generation												

PACKAGED TERMINAL UNITS

	D	R	P	T	H	P	0	7	Y	3	2	3	5	1	A
Brand DR: Durastar															
Model Type PTAC: Electric Heat PTHP: Heat Pump															
Nominal Cooling BTUs 07: 7,200-7,300 09: 8,800-9,200 12: 12,000 15: 14,700															
Voltage X: 115V Y: 208-230V															
Refrigerant Series 32: R-32 41: R-410A															
Heater Size 35: 3.5 kW 50: 5.0 kW															
Major Generation 1: First Generation															
Minor Generation A: First Generation															

UNITARY EQUIPMENT

Engineered to provide premier comfort through reliable performance under the harshest conditions.

[ADVANCED SERIES]

Durastar's Advanced Series is not only durable but also operates with whisper-quiet technologies and cost-saving efficiencies, providing customers with enhanced performances.

[CORE SERIES]

Durastar's Core Series offers customers value-forward products that are built reliably and tested to perform.

HOW IT WORKS

An HVAC system uses refrigerant to absorb heat from either the indoor or outdoor space depending on the season to condition your home. The key aspect of unitary equipment is it uses ductwork running throughout your home to facilitate the movement of air in this process. The diagram below shows an example of the system while it is operating in cooling mode.





AIR CONDITIONERS

Durastar air conditioners are rigorously tested to deliver quiet, reliable and affordable cooling in tough conditions and all kinds of climates.



HEAT PUMPS

Durastar heat pumps offer two distinct advantages to keep consumers comfortable: their all-electric design makes them energy efficient and they have the ability to flip between heating and cooling functionality based on the season.



GAS FURNACES

When the temperature drops dramatically, durable Durastar gas furnaces power through to provide consistent comfort.



ALUMINUM CASED COILS

Indoor air coils serve two distinct purposes: Heat or cool home airflow and reduce or remove humidity from indoor climates.



AIR HANDLERS

The versatile, compact, multi-positional design provides a variety of options to fit any existing space.



FRONT RETURN AIR HANDLER

Durastar air handlers ensure that comfortable air is constantly circulating through every floor, from top to bottom.

UNITARY / OUTDOOR UNITS

AIR CONDITIONERS

15.2 SEER2 | 14.3 SEER2 | 13.4 SEER2



Durastar air conditioners are rigorously tested to deliver quiet, reliable and affordable cooling in tough conditions and all kinds of climates.

- Durastar air conditioners are available in 13, 14 and 15 SEER2 lines
- Models available: 1.5 – 5 ton
- Sturdy louvered steel cabinet
- Easily accessible control box
- Field-installed filter drier

15.2 SEER2 AIR CONDITIONERS [ADVANCED SERIES]

Model #	Nominal Tonnage	Sound Rating (dBA)	Stages	Recommended Breaker (A)	Refrigerant Line (Liquid/Suction)(in. OD)	Weight (lbs)	Dimensions (in.)(H x W x D)
DRAC15B18AJ1ANA	1.5	71	1	15	3/8 x 3/4	150	25.17 x 29.54 x 29.54
DRAC15B24AJ1ANA	2.0	69	1	20	3/8 x 3/4	168	25.17 x 33.66 x 33.66
DRAC15B30AJ1ANA	2.5	71	1	25	3/8 x 3/4	180	27.17 x 33.66 x 33.66
DRAC15B36AJ1ANA	3.0	72	1	30	3/8 x 3/4	194	31.17 x 33.66 x 33.66
DRAC15B42AJ1ANA	3.5	73	1	30	3/8 x 7/8	171	35.17 x 33.66 x 33.66
DRAC15B48AJ1ANA	4.0	74	1	50	3/8 x 7/8	225	35.17 x 33.66 x 33.66
DRAC15B60AJ1ANA	5.0	76	1	50	3/8 x 7/8	246	45.17 x 35.43 x 35.43

14.3 SEER2 AIR CONDITIONERS [CORE SERIES]

Model #	Nominal Tonnage	Sound Rating (dBA)	Stages	Recommended Breaker (A)	Refrigerant Line (Liquid/Suction)(in. OD)	Weight (lbs)	Dimensions (in.)(H x W x D)
DRAC14B18AJ1ANA	1.5	70	1	15	3/8 x 3/4	134	25.17 x 29.54 x 29.54
DRAC14B24AJ1ANA	2.0	71	1	25	3/8 x 3/4	151	25.17 x 33.66 x 33.66
DRAC14B30AJ1ANA	2.5	71	1	25	3/8 x 3/4	151	25.17 x 33.66 x 33.66
DRAC14B36AJ1ANA	3.0	71	1	30	3/8 x 3/4	172	25.17 x 33.66 x 33.66
DRAC14B42AJ1ANA	3.5	73	1	30	3/8 x 7/8	171	35.17 x 33.66 x 33.66
DRAC14B48AJ1ANA	4.0	74	1	50	3/8 x 7/8	225	35.17 x 33.66 x 33.66
DRAC14B60AJ1ANA	5.0	76	1	50	3/8 x 7/8	246	45.17 x 35.43 x 35.43

14.3 SEER2 SMALL CHASSIS AIR CONDITIONERS [CORE SERIES] - COMING Q2 2025

Model #	Nominal Tonnage	Sound Rating (dBA)	Stages	Recommended Breaker (A)	Refrigerant Line (Liquid/Suction)(in. OD)	Weight (lbs)	Dimensions (in.)(H x W x D)
DRACS14B18AJ1ANA	1.5	76	1	20	3/8 x 3/4	154	32.25 x 23.63 x 23.63
DRACS14B24AJ1ANA	2.0	76	1	25	3/8 x 3/4	153	32.25 x 23.63 x 23.63
DRACS14B30AJ1ANA	2.5	74	1	25	3/8 x 3/4	185	32.25 x 27.63 x 27.63

13.4 SEER2 AIR CONDITIONERS* [CORE SERIES]

Model #	Nominal Tonnage	Sound Rating (dBA)	Stages	Recommended Breaker (A)	Refrigerant Line (Liquid/Suction)(in. OD)	Weight (lbs)	Dimensions (in.)(H x W x D)
DRAC13B18AJ1NNA	1.5	70	1	15	3/8 x 3/4	134	25.17 x 29.54 x 29.54
DRAC13B24AJ1NNA	2.0	70	1	20	3/8 x 3/4	134	25.17 x 29.54 x 29.54
DRAC13B30AJ1NNA	2.5	71	1	25	3/8 x 3/4	151	25.17 x 33.66 x 33.66
DRAC13B36AJ1NNA	3.0	71	1	35	3/8 x 3/4	172	25.17 x 33.66 x 33.66
DRAC13B42AJ1NNA	3.5	68	1	35	3/8 x 7/8	245	27.17 x 33.66 x 33.66
DRAC13B48AJ1NNA	4.0	71	1	50	3/8 x 7/8	258	39.17 x 35.54 x 35.54
DRAC13B60AJ1NNA	5.0	76	1	50	3/8 x 7/8	284	45.17 x 35.54 x 35.54

*Available in the North Region only, as defined by the United States Department of Energy (DOE).

UNITARY / OUTDOOR UNITS

HEAT PUMPS

15.2 SEER2 | 14.3 SEER2



Durastar heat pumps offer two distinct advantages to keep consumers comfortable. Through warm seasons, our models operate as air conditioners, and when temperatures drop, flip the switch to keep indoor climates warm.

- Durastar units are available in 15.2 and 14.3 SEER2 lines
- Two-stage compressor
- Models available: 1.5 – 5 ton
- Sturdy louvered steel cabinet
- Easily accessible control box
- Field-installed filter drier



15.2 SEER2 HEAT PUMPS [ADVANCED SERIES]

Model #	Nominal Tonnage	Sound Rating (dBA)	Stages	Recommended Breaker (A)	Refrigerant Line (Liquid/Suction)(in. OD)	Weight (lbs)	Dimensions (in.) (H x W x D)
DRHP15B18AJ2ANA	1.5	73	2	20	3/8 X 3/4	150	25.00 x 29.75 x 29.75
DRHP15B24AJ2ANA	2.0	73	2	25	3/8 X 3/4	150	25.00 x 29.75 x 29.75
DRHP15B30AJ2ANA	2.5	73	2	30	3/8 X 3/4	202	35.00 x 33.75 x 33.75
DRHP15B36AJ2ANA	3.0	74	2	30	3/8 X 3/4	214	39.00 x 35.75 x 35.75
DRHP15B42AJ2ANA	3.5	74	2	40	3/8 X 7/8	240	39.00 x 35.75 x 35.75
DRHP15B48AJ2ANA	4.0	74	2	45	3/8 X 7/8	240	39.00 x 35.75 x 35.75
DRHP15B60AJ2ANA	5.0	74	2	50	3/8 X 7/8	275	39.00 x 35.75 x 35.75

14.3 SEER2 HEAT PUMPS [CORE SERIES]

Model #	Nominal Tonnage	Sound Rating (dBA)	Stages	Recommended Breaker (A)	Refrigerant Line (Liquid/Suction)(in. OD)	Weight (lbs)	Dimensions (in.) (H x W x D)
DRHP14B18AJ1ANA	1.5	73	1	20	3/8 X 3/4	163	25.17 x 29.54 x 29.54
DRHP14B24AJ2ANA	2.0	73	2	25	3/8 X 3/4	158	25.17 x 29.54 x 29.54
DRHP14B30AJ2ANA	2.5	72	2	30	3/8 X 3/4	178	27.17 x 33.66 x 33.66
DRHP14B36AJ2ANA	3.0	72	2	30	3/8 X 3/4	213	35.17 x 33.66 x 33.66
DRHP14B42AJ2ANA	3.5	72	2	40	3/8 X 7/8	220	35.17 x 33.66 x 33.66
DRHP14B48AJ2ANA	4.0	74	2	45	3/8 X 7/8	253	35.17 x 33.66 x 33.66
DRHP14B60AJ2ANA	5.0	74	2	50	3/8 X 7/8	253	39.17 x 35.54 x 35.54

14.3 SEER2 SMALL CHASSIS HEAT PUMPS [CORE SERIES] - COMING Q2 2025

Model #	Nominal Tonnage	Sound Rating (dBA)	Stages	Recommended Breaker (A)	Refrigerant Line (Liquid/Suction) (in. OD)	Weight (lbs)	Dimensions (in.)(H x W x D)
DRHPS14B18AJ1ANA	1.5	73	1	20	3/8 x 3/4	135	35.38 x 23.63 x 23.63
DRHPS14B24AJ2ANA	2.0	74	2	25	3/8 x 3/4	137	35.38 x 23.63 x 23.63
DRHPS14B30AJ2ANA	2.5	76	2	30	3/8 x 3/4	163	35.38 x 27.63 x 27.63

UNITARY / INDOOR UNITS

GAS FURNACES

96% AFUE | 95% AFUE



When the temperature drops dramatically, durable Durastar gas furnaces power through to provide consistent comfort.

- All furnace models feature Direct Spark Ignition for reliability and longevity
- Featuring aluminized-steel primary heat exchangers which provides maximum corrosion resistance and thermal fatigue reliability
- 7-segment LED diagnostics on 80% units and 95% Constant Torque Series
- Low-profile 34" cabinet is ideal for space-constrained installations

96% AFUE TWO STAGE - CONSTANT CFM [ADVANCED SERIES]

Model #	BTU Input	Airflow Direction	Recommended Breaker (A)	Dimensions (in.) (H x W x D)
DR96M4AW0402317SAB	42,000	MULTI-POSITION	15	34.0 x 17.5 x 28.0
DR96M4AW0602317SAB	56,000	MULTI-POSITION	15	34.0 x 17.5 x 28.0
DR96M4AW0702317SAB	70,000	MULTI-POSITION	15	34.0 x 17.5 x 28.0
DR96M4AW0702521SAB	70,000	MULTI-POSITION	25	34.0 x 21.0 x 28.0
DR96M4AW0852521SAB	84,000	MULTI-POSITION	25	34.0 x 21.0 x 28.0
DR96M4AW1002521SAB	98,000	MULTI-POSITION	25	34.0 x 21.0 x 28.0
DR96M4AW1152524SAB	112,000	MULTI-POSITION	25	34.0 x 24.5 x 28.0

95% AFUE SINGLE STAGE – CONSTANT CFM [CORE SERIES]

Model #	BTU Input	Airflow Direction	Recommended Breaker (A)	Dimensions (in.) (H x W x D)
DR95M4AW0401317SAB	42,000	MULTI-POSITION	15	34.0 x 17.5 x 28.0
DR95M4AW0601317SAB	56,000	MULTI-POSITION	15	34.0 x 17.5 x 28.0
DR95M4AW0701317SAB	70,000	MULTI-POSITION	15	34.0 x 17.5 x 28.0
DR95M4AW0701521SAB	70,000	MULTI-POSITION	25	34.0 x 21.0 x 28.0
DR95M4AW0851521SAB	84,000	MULTI-POSITION	25	34.0 x 21.0 x 28.0
DR95M4AW1001521SAB	98,000	MULTI-POSITION	25	34.0 x 21.0 x 28.0
DR95M4AW1151524SAB	112,000	MULTI-POSITION	25	34.0 x 24.5 x 28.0

95% AFUE SINGLE STAGE – CONSTANT TORQUE [CORE SERIES]

Model #	BTU Input	Airflow Direction	Recommended Breaker (A)	Dimensions (in.) (H x W x D)
DR95M4AT0401317SAN	42,000	MULTI-POSITION	15	34.0 x 17.5 x 28.0
DR95M4AT0601317SAN	56,000	MULTI-POSITION	15	34.0 x 17.5 x 28.0
DR95M4AT0701317SAN	70,000	MULTI-POSITION	15	34.0 x 17.5 x 28.0
DR95M4AT0701521SAN	70,000	MULTI-POSITION	20	34.0 x 21.0 x 28.0
DR95M4AT0851521SAN	84,000	MULTI-POSITION	20	34.0 x 21.0 x 28.0
DR95M4AT1001521SAN	98,000	MULTI-POSITION	20	34.0 x 21.0 x 28.0
DR95M4AT1151524SAN	112,000	MULTI-POSITION	20	34.0 x 24.5 x 28.0



UNITARY / INDOOR UNITS

GAS FURNACES

80% AFUE

80% AFUE TWO STAGE [ADVANCED SERIES]

Model #	BTU Input	Airflow Direction	Recommended Breaker (A)	Dimensions (in.)(H x W x D)
DR80UHAW0502314SAB	50,000	UPFLOW / HORIZONTAL	15	34.0 x 14.0 x 28.0
DR80UHAW0752417SAB	75,000	UPFLOW / HORIZONTAL	20	34.0 x 17.5 x 28.0
DR80UHAW1002417SAB	100,000	UPFLOW / HORIZONTAL	25	34.0 x 17.5 x 28.0
DR80UHAW1002521SAB	100,000	UPFLOW / HORIZONTAL	20	34.0 x 21.0 x 28.0
DR80UHAW1252524SAB	125,000	UPFLOW / HORIZONTAL	20	34.0 x 24.5 x 28.0
DR80UHAW1502524SAB	150,000	UPFLOW / HORIZONTAL	25	34.0 x 24.5 x 28.0

80% AFUE SINGLE STAGE [CORE SERIES]

Model #	BTU Input	Airflow Direction	Recommended Breaker (A)	Dimensions (in.)(H x W x D)
DR80DZAT0501314SAN	50,000	DOWNFLOW	15	34.0 x 14.0 x 28.0
DR80DZAT0751317SAN	75,000	DOWNFLOW	15	34.0 x 17.5 x 28.0
DR80DZAT0751521SAN	75,000	DOWNFLOW	20	34.0 x 21.0 x 28.0
DR80DZAT1001521SAN	100,000	DOWNFLOW	20	34.0 x 21.0 x 28.0
DR80DZAT1251524SAN	125,000	DOWNFLOW	25	34.0 x 24.5 x 28.0
DR80UHAT0501314SAN	50,000	UPFLOW / HORIZONTAL	15	34.0 x 14.0 x 28.0
DR80UHAT0751417SAN	75,000	UPFLOW / HORIZONTAL	15	34.0 x 17.5 x 28.0
DR80UHAT0751421SAN	75,000	UPFLOW / HORIZONTAL	15	34.0 x 21.0 x 28.0
DR80UHAT1001521SAN	100,000	UPFLOW / HORIZONTAL	15	34.0 x 21.0 x 28.0
DR80UHAT1251524SAN	125,000	UPFLOW / HORIZONTAL	15	34.0 x 24.5 x 28.0



ALUMINUM CASED COILS



Indoor air coils serve two distinct purposes: Heat or cool home airflow and reduce or remove humidity from indoor climates. Durastar air coils maximize the efficiency of that process, ensuring homeowners remain as comfortable as possible through each and every season.

- Designed for use with Durastar outdoor units
- Available for vertical upflow or downflow and horizontal left or right airflow
- Models available: 2 – 5 ton
- Constructed of aluminum fins bonded to internally grooved aluminum tubing
- Coils are tested at the factory with an extensive refrigerant leak check
- Thermal expansion valve (TXV)
- Integrated Refrigerant Detection System providing system protection and homeowner peace-of-mind with A2L refrigerant monitoring

COILS

Model #	Nominal Tonnage	Height (in.)	Width (in.)	Depth (in.)	Coil Formation	Refrigerant Line (Liquid/Suction)(in. OD)	Weight (lbs)
DRBEF2414STAAMC	2.0	23.2	14.0	21.7	A	3/8 x 3/4	45
DRBEF2417STANMC	2.0	20.0	17.5	21.7	N	3/8 x 3/4	43
DRBEF3617STANMC	3.0	20.0	17.5	21.7	N	3/8 x 3/4	49
DRBEF3621STANMC	3.0	20.0	21.0	21.7	N	3/8 x 3/4	51
DRBEF3621MTANMC	3.0	28.0	21.0	21.7	N	3/8 x 7/8	71
DRBEF4821STANMC	4.0	28.0	21.0	21.7	N	3/8 x 7/8	71
DRBEF4824STANMC	4.0	32.0	24.5	21.7	N	3/8 x 7/8	83
DRBEF4824MTANMC	4.0	32.0	24.5	21.7	N	3/8 x 7/8	100
DRBEF6021STAAMC	5.0	34.5	21.0	21.7	A	3/8 x 7/8	76
DRBEF6024STANMC	5.0	32.0	24.5	21.7	N	3/8 x 7/8	100

AIR HANDLERS

ECM



Durastar air handlers ensure that comfortable air is constantly circulating through every floor, from top to bottom. The versatile, compact, multi-positional design provides a variety of options to fit any existing space.

CONSTANT TORQUE MODELS [CORE SERIES]

- All-aluminum coils
- Two-stage ECM motor
- Sturdy steel cabinet with 1" of foil-faced insulation for quiet, efficient comfort
- Thermal expansion valve (TXV)
- Field-installed auxiliary heater kits
- Integrated Refrigerant Detection System providing system protection and homeowner peace-of-mind with A2L refrigerant monitoring

Model #	Nominal Tonnage	Supply Opening (in.)(WxD)	Return Opening (in.)(WxD)	Coil Formation	Refrigerant Line (Liquid/Suction)(in. OD)	Voltage (V)	Weight (lbs)	Dimensions (in.)(H x W x D)
DRAH2TB2417ASTNNA	2.0	10.32 X 16.0	15.88 X 19.75	N	3/8 X 3/4	115	92	42.5 x 17.5 x 21.7
DRAH2TB2417ASTNNJ	2.0	10.32 X 16.0	15.88 X 19.75	N	3/8 X 3/4	208-230	92	42.5 x 17.5 x 21.7
DRAH2TB3617ASTNNA	3.0	10.32 X 16.0	15.88 X 19.75	N	3/8 X 3/4	115	96	42.5 x 17.5 x 21.7
DRAH2TB3617ASTNNJ	3.0	10.32 X 16.0	15.88 X 19.75	N	3/8 X 3/4	208-230	96	42.5 x 17.5 x 21.7
DRAH2TB3621ASTNNA	3.0	10.32 X 19.5	19.38 X 19.75	N	3/8 X 3/4	115	111	42.5 x 21.0 x 21.7
DRAH2TB3621ASTNNJ	3.0	10.32 X 19.5	19.38 X 19.75	N	3/8 X 3/4	208-230	111	42.5 x 21.0 x 21.7
DRAH2TB3621AMTNNA	3.0	10.32 X 19.5	19.38 X 19.75	N	3/8 X 7/8	115	126	50.5 x 21.0 x 21.7
DRAH2TB3621AMTNNJ	3.0	10.32 X 19.5	19.38 X 19.75	N	3/8 X 7/8	208-230	126	50.5 x 21.0 x 21.7
DRAH2TB4821ASTNNA	4.0	10.32 X 19.5	19.38 X 19.75	N	3/8 X 7/8	115	128	50.5 x 21.0 x 21.7
DRAH2TB4821ASTNNJ	4.0	10.32 X 19.5	19.38 X 19.75	N	3/8 X 7/8	208-230	128	50.5 x 21.0 x 21.7
DRAH2TB4824ASTNNA	4.0	10.32 X 23.0	22.88 X 19.75	N	3/8 X 7/8	115	128	55.5 x 24.5 x 21.7
DRAH2TB4824ASTNNJ	4.0	10.32 X 23.0	22.88 X 19.75	N	3/8 X 7/8	208-230	128	55.5 x 24.5 x 21.7
DRAH2TB6021ASTANA	5.0	10.32 X 19.5	19.38 X 19.75	A	3/8 X 7/8	115	139	57.0 x 21.0 x 21.7
DRAH2TB6021ASTANJ	5.0	10.32 X 19.5	19.38 X 19.75	A	3/8 X 7/8	208-230	139	57.0 x 21.0 x 21.7
DRAH2TB6024ASTNNA	5.0	10.32 X 23.0	22.88 X 19.75	N	3/8 X 7/8	115	161	55.5 x 24.5 x 21.7
DRAH2TB6024ASTNNJ	5.0	10.32 X 23.0	22.88 X 19.75	N	3/8 X 7/8	208-230	161	55.5 x 24.5 x 21.7

FRONT RETURN AIR HANDLERS

- All-aluminum coils
- Two-stage ECM motor and single-stage PSC motor options available
- Installed TXV
- Front or bottom return convertible
- Optional factory-installed heater kits
- Molex plug for field-installed heater kits
- Optional factory-installed float switch on DRF2TB models
- Integrated Refrigerant Detection System providing system protection and homeowner peace-of-mind with A2L refrigerant monitoring



Model #	Nominal Tonnage	Height (in.)	Width (in.)	Depth (in.)	Coil Formation
ECM Motor					
DRF2TB2421ASTSNJN0	2.0	–	20 X 20 X 1	80	36.0 X 21.5 X 17.0
DRF2TB2421ASTSNJB3	2.0	3	20 X 20 X 1	80	36.0 X 21.5 X 17.0
DRF2TB2421ASTSNJB5	2.0	5	20 X 20 X 1	80	36.0 X 21.5 X 17.0
DRF2TB2421ASTSNJB8	2.0	8	20 X 20 X 1	80	36.0 X 21.5 X 17.0
DRF2TB2421ASTSNJB1	2.0	10	20 X 20 X 1	80	36.0 X 21.5 X 17.0
DRF2TB3624ASTSNJN0	3.0	–	20 X 25 X 1	95	36.0 X 24.0 X 21.0
DRF2TB3624ASTSNJB3	3.0	3	20 X 25 X 1	95	36.0 X 24.0 X 21.0
DRF2TB3624ASTSNJB5	3.0	5	20 X 25 X 1	95	36.0 X 24.0 X 21.0
DRF2TB3624ASTSNJB8	3.0	8	20 X 25 X 1	95	36.0 X 24.0 X 21.0
DRF2TB3624ASTSNJB1	3.0	10	20 X 25 X 1	95	36.0 X 24.0 X 21.0
PSC Motor					
DRF1PB1821ASTSNJN0	1.5	–	20 X 20 X 1	80	36.0 X 21.5 X 17.0
DRF1PB1821ASTSNJB3	1.5	3	20 X 20 X 1	80	36.0 X 21.5 X 17.0
DRF1PB1821ASTSNJB5	1.5	5	20 X 20 X 1	80	36.0 X 21.5 X 17.0
DRF1PB1821ASTSNJB8	1.5	8	20 X 20 X 1	80	36.0 X 21.5 X 17.0
DRF1PB2421ASTSNJN0	2.0	–	20 X 20 X 1	80	36.0 X 21.5 X 17.0
DRF1PB2421ASTSNJB3	2.0	3	20 X 20 X 1	80	36.0 X 21.5 X 17.0
DRF1PB2421ASTSNJB5	2.0	5	20 X 20 X 1	80	36.0 X 21.5 X 17.0
DRF1PB2421ASTSNJB8	2.0	8	20 X 20 X 1	80	36.0 X 21.5 X 17.0
DRF1PB2421ASTSNJB1	2.0	10	20 X 20 X 1	80	36.0 X 21.5 X 17.0
DRF1PB3024ASTSNJN0	2.5	–	20 X 25 X 1	95	36.0 X 24.0 X 21.0
DRF1PB3024ASTSNJB3	2.5	3	20 X 25 X 1	95	36.0 X 24.0 X 21.0
DRF1PB3024ASTSNJB5	2.5	5	20 X 25 X 1	95	36.0 X 24.0 X 21.0
DRF1PB3024ASTSNJB8	2.5	8	20 X 25 X 1	95	36.0 X 24.0 X 21.0
DRF1PB3024ASTSNJB1	2.5	10	20 X 25 X 1	95	36.0 X 24.0 X 21.0
DRF1PB3624ASTSNJN0	3.0	–	20 X 25 X 1	95	36.0 X 24.0 X 21.0
DRF1PB3624ASTSNJB3	3.0	3	20 X 25 X 1	95	36.0 X 24.0 X 21.0
DRF1PB3624ASTSNJB5	3.0	5	20 X 25 X 1	95	36.0 X 24.0 X 21.0
DRF1PB3624ASTSNJB8	3.0	8	20 X 25 X 1	95	36.0 X 24.0 X 21.0
DRF1PB3624ASTSNJB1	3.0	10	20 X 25 X 1	95	36.0 X 24.0 X 21.0

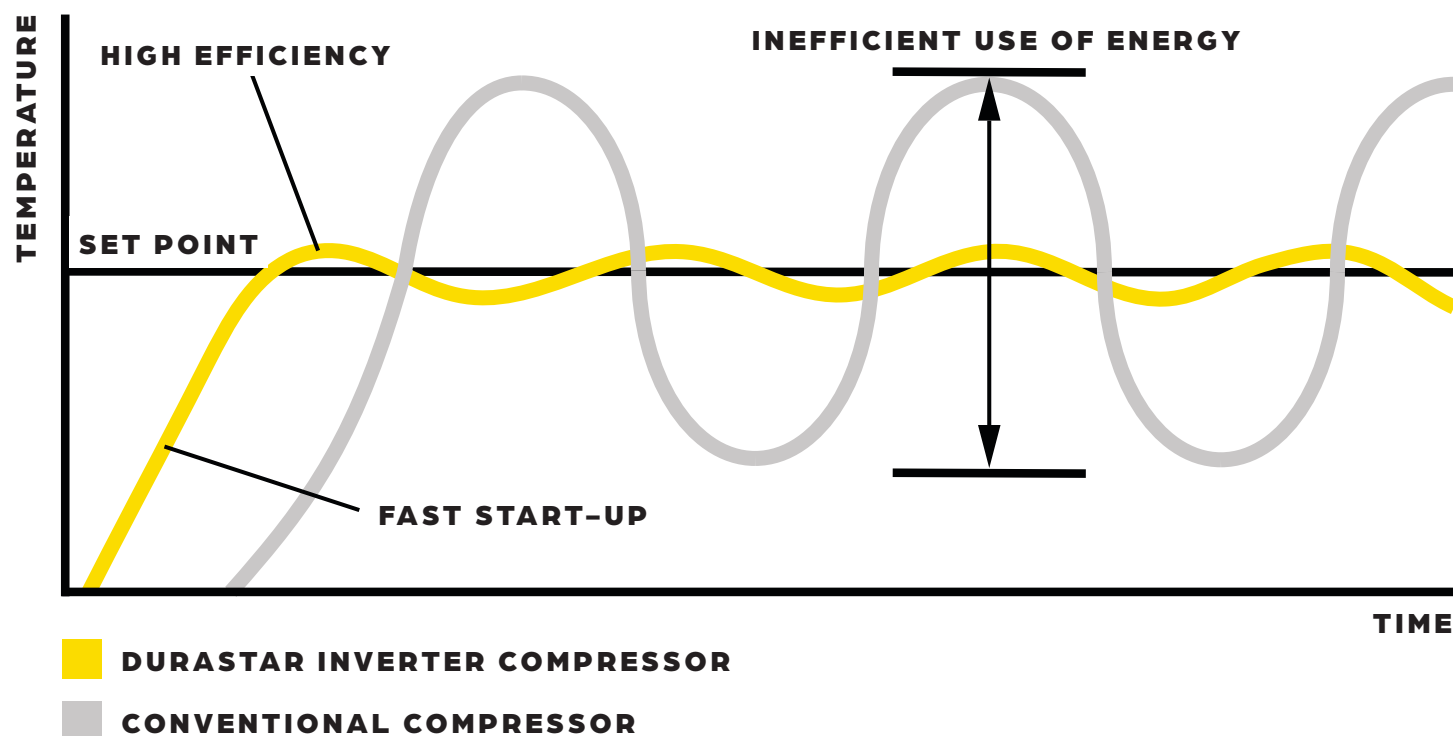
INVERTER TECHNOLOGY

INVERTER COMPRESSOR

An inverter compressor helps regulate the indoor temperature while limiting energy consumption by pumping heated or chilled refrigerant through the coil and flowing air over the coil for dehumidification and temperature regulation. Inverter compressors modulate energy usage to provide only what is necessary to achieve the set point, increasing the unit's efficiency and longevity.

QUIET OPERATION

Thanks to the inverter compressor and DC motors, Durastar outdoor units are designed to operate as quiet as 54 dBs—the level of a normal conversation.



SIRIUS HEAT™

SIRIUS HEAT

Durastar outdoor units with Sirius Heat™ combine innovative technologies to provide warmth in even the harshest climates. They have up to 100% heating at 0°F and consistent operation down to a brisk -22°F.

Sirius Heat products on page 30.

LOW AMBIENT COOLING

Durastar Sirius Heat paired systems provide cooling down to temperatures as low as -22°F.

INCLUDED BASEPAN AND CRANKCASE HEATER

All Durastar outdoor units include a basepan and crankcase heater, allowing the unit to function reliably at lower operating temperatures.



CROSSOVER HEAT PUMPS

COMMUNICATING/24V SIDE DISCHARGE HEAT PUMPS & AIR HANDLERS



Our side-discharge units are designed to pack a lot of efficiency into a small footprint. The inverter compressor makes them much quieter than traditional unitary equipment. Side discharge units are perfect for combining the technology benefits of our high-efficiency mini-split products with the compatibility of our variable speed air handlers.

- Inverter compressor for high-efficiency, quiet operation and better humidity control
- RS-485 communicating and 24V thermostat compatible
- Air handlers are 115V/230V convertible
- DRSTAT101 wired programmable thermostat included
- Variable capacity air handlers – three models cover all capacities from 1.5 – 5 tons
- Many system pairings are eligible for 25C IRA tax credits
- RDS sensor factory installed for easy installation

SIRIUS HEAT SYSTEM COMBINATIONS

Air Handler Model #	Outdoor Model #	Cooling Capacity ¹ (BTU)	Heating Capacity ² (BTU)	Heating Capacity at 5°F ³ (BTU)	SEER2	EER2	HSPF2	Refrigerant Line (Liquid/Suction) (in. OD)	Outdoor Sound Rating (dBA)	Recommended Breaker (A)	Air Handler Dimensions (in.)(H x W x D)	Outdoor Unit Dimensions (in.)(H x W x D)
DRUM1824S2A	DRU1H18S2A	18000	19000	18000	19	12.5	9.7	3/8 X 3/4	59	20	45.00 x 17.50 x 21.00	26.50 x 35.00 x 13.44
DRUM1824S2A	DRU1H24S2A	23000	24000	21600	18.3	11.7	10	3/8 X 3/4	60	20	45.00 x 17.50 x 21.00	26.50 x 35.00 x 13.44
DRUM3036S2A	DRU1H30S2A	30000	34000	32600	16.8	11.7	10	3/8 X 3/4	60.5	30	49.00 x 21.00 x 21.00	31.94 x 37.25 x 16.19
DRUM3036S2A	DRU1H36S2A	36000	37000	39000	17.3	11.7	10.3	3/8 X 3/4	62.5	30	49.00 x 21.00 x 21.00	38.56 x 38.56 x 16.13
DRUM4260S2A	DRU1H42S2A	42000	50000	46000	16.7	11.7	9.5	3/8 X 3/4	65	40	53.00 x 24.50 x 21.00	38.56 x 38.56 x 16.13
DRUM4260S2A	DRU1H48S2A	48000	50000	46000	16.5	10.5	9.5	3/8 X 3/4	65	40	53.00 x 24.50 x 21.00	38.56 x 38.56 x 16.13
DRUM4260S2A	DRU1H49S2A	48000	56000	52000	16.3	11.7	9	3/8 X 3/4	65	40	53.00 x 24.50 x 21.00	52.50 x 37.50 x 16.13
DRUM4260S2A	DRU1H60S2A	54000	56000	52000	16	10	9	3/8 X 3/4	65	40	53.00 x 24.50 x 21.00	52.50 x 37.50 x 16.13

STANDARD HEAT SYSTEM COMBINATIONS

Air Handler Model #	Outdoor Model #	Cooling Capacity ¹ (BTU)	Heating Capacity ² (BTU)	Heating Capacity at 5°F ³ (BTU)	SEER2	EER2	HSPF2	Refrigerant Line (Liquid/Suction) (in. OD)	Outdoor Sound Rating (dBA)	Recommended Breaker (A)	Air Handler Dimensions (in.)(H x W x D)	Outdoor Unit Dimensions (in.)(H x W x D)
DRUM1824S2A	DRU1U18S2A	18000	18000	11200	18.8	11	9.1	3/8 X 3/4	55	20	45.00 x 17.50 x 21.00	21.81 x 31.69 x 13.00
DRUM1824S2A	DRU1U24S2A	24000	26000	21600	18.1	11	9.7	3/8 X 3/4	60	20	45.00 x 17.50 x 21.00	26.50 x 35.00 x 13.44
DRUM3036S2A	DRU1U30S2A	30000	31000	19100	17	10.7	8.5	3/8 X 3/4	60	25	49.00 x 21.00 x 21.00	31.94 x 37.25 x 16.19
DRUM3036S2A	DRU1U36S2A	36000	36000	27000	16.1	10	8.7	3/8 X 3/4	63	30	49.00 x 21.00 x 21.00	31.94 x 37.25 x 16.19
DRUM4260S2A	DRU1U48S2A	48000	48000	38000	16	10	8.5	3/8 X 3/4	65	40	53.00 x 24.50 x 21.00	38.56 x 38.56 x 16.13
DRUM4260S2A	DRU1U60S2A	54000	54000	38000	15.2	8.6	8.4	3/8 X 3/4	65	40	53.00 x 24.50 x 21.00	38.56 x 38.56 x 16.13

Capacities can vary based on the indoor units connected.

1 AHRI conditions measured at 95°F (A1Full)

2 AHRI conditions measured at 47°F (H1Full)

3 Capacity under AHRI M1 conditions (H42): Indoor 70°F DB, 67°F WB // Outdoor 5°F DB, 4°F WB

4 Suction insulated lineset required

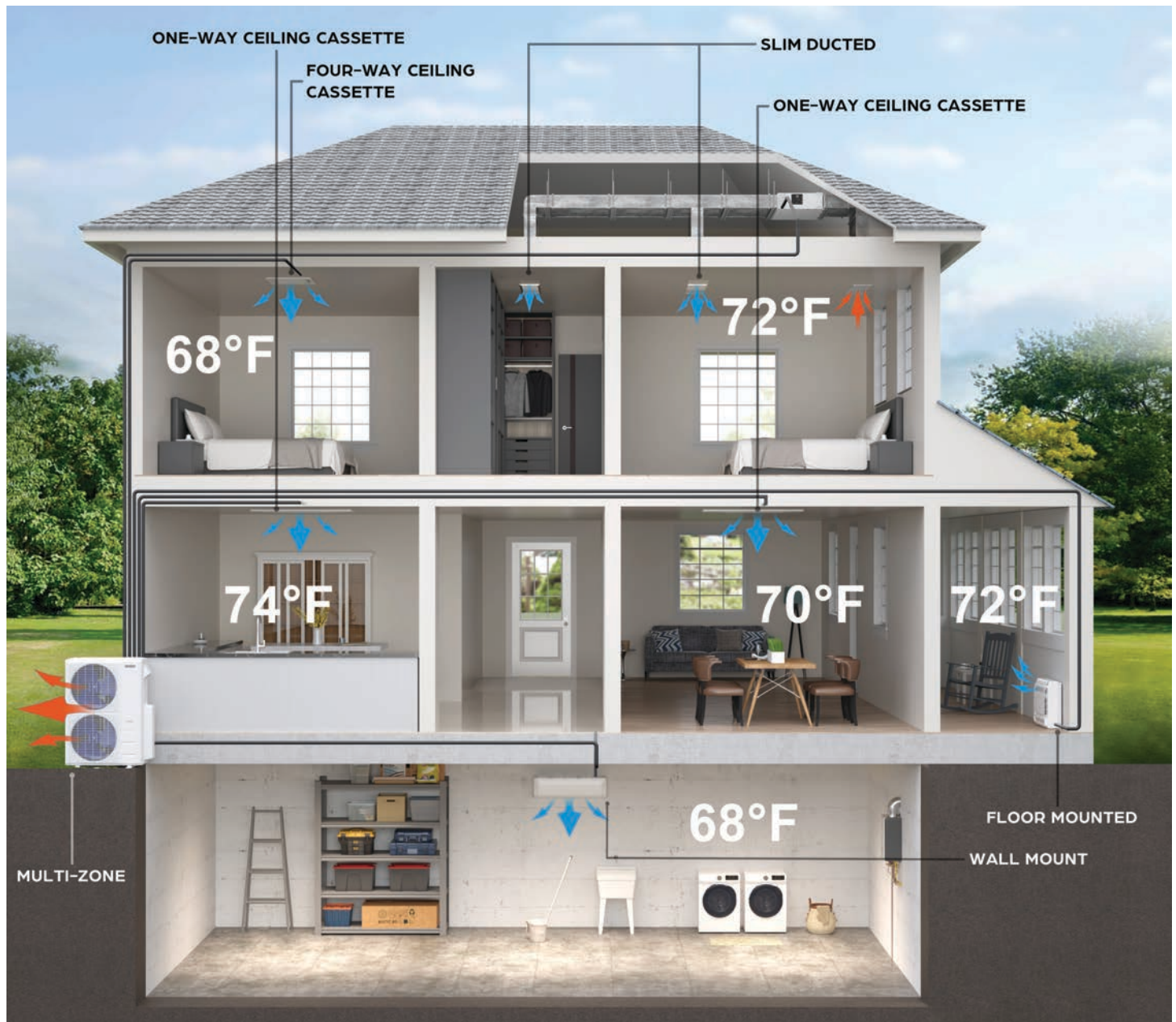
MINI-SPLITS

Durastar ductless solutions are the ideal solution for renovations, remodels, new additions and zone-specific heating and cooling. Our products are efficient, affordable and perfect for high-quality individual comfort.



HOW IT WORKS

Mini-splits in most cases eliminate the need for ductwork by bringing the heat exchanger closer to your conditioned space. The efficiency of the system is raised by replacing the ductwork with refrigerant carrying line sets run directly to the indoor unit. Durastar also offers high efficiency ducted options to fit the need of your home. When multiple indoor units are installed throughout a home, the user benefits from a zoning solution to customize their comfort.





WALL MOUNT

Mounting to the wall, these units offer a slim profile to blend seamlessly into any interior design.



FLOOR/CEILING FLEX

A dynamic option based on the needs of the space, the flex mini-split can be installed up high or down low for top-to-bottom comfort.



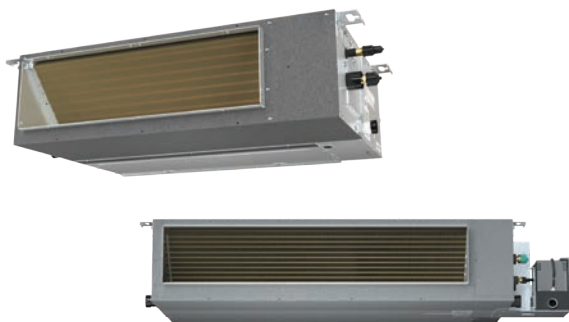
CEILING CASSETTES

Ceiling cassettes can be installed flush with the ceiling for powerful comfort control in the most discreet package possible.



FLOOR MOUNT

The floor-mount unit's compact footprint fits perfectly beneath a window or in place of an existing radiator.



SLIM DUCTED

Adding slim-ducted mini-splits to a space's existing registers can create zones for an otherwise zoneless system or bring airflow to new additions. Available in high and low static options.



MULTI-POSITIONAL AIR HANDLER

Combine the elite efficiencies of our mini-split outdoor units with a more traditional ducted solution to condition large spaces.

MINI-SPLITS / OUTDOOR UNITS

SIRIUS HEAT™

FOR SERIOUS COLD, THERE'S SIRIUS HEAT™

Outdoor units with Sirius Heat technology combine innovations to provide up to 100% heating capacity at 0°F and consistent performance in temperatures as low as -22°F.

- High-efficiency heat pump up to 27.2 SEER2
- Up to 100% heating capacity at 0°F
- Low ambient heating down to -22°F
- Low ambient cooling down to -22°F
- Included base pan heater
- Inverter compressor
- Auto-restart feature
- Anti-corrosion golden fin coating
- Port adaptors included

SIRIUS HEAT - SINGLE ZONE

Model #	Cooling Capacity ¹ (BTU)	Heating Capacity ² (BTU)	Heating Capacity at 5°F ³ (BTU)	SEER2	EER2	HSPF2	Refrigerant Line (Liquid/Suction) (in. OD)	Outdoor Sound Rating (dBA)	Recommended Breaker (A)	Dimensions (in.)(H x W x D)
DRA1H06S2A	6000	7000	7500	25.3	16	14.6	1/4 X 3/8	53	15	21.88 x 30.13 x 11.94
DRA1H09S2A	9000	12000	11500	27.2	15	12.5	1/4 X 3/8	56	15	21.81 x 31.69 x 13.00
DRA1H12S2A	12000	12000	11500	25	13.2	10.5	1/4 X 3/8	56	15	21.81 x 31.69 x 13.00
DRA1H18S2A	18000	18000	18000	21.7	13	10.8	1/4 X 1/2	59	20	26.50 x 35.06 x 13.50
DRA1H24S2A	24000	26000	24000	22.3	12.5	13.3	3/8 X 5/8	61	25	31.88 x 37.25 x 16.13
DRA1H33S2A	33000	36000	34600	20	11.7	10.5	3/8 X 3/4	63.5	35	31.88 x 37.25 x 16.13

SIRIUS HEAT - MULTI-ZONE

Model #	Cooling Capacity ¹ (BTU)	Heating Capacity ² (BTU)	Heating Capacity at 5°F ³ (BTU)	Max # of Zones	SEER2	EER2	HSPF2	Outdoor Sound Rating (dBA)	Recommended Breaker (A)	Dimensions (in.)(H x W x D)
DRA3H18M2A	19000	20000	18000	3	3	21	13	62	20	31.88 x 37.25 x 16.13
DRA4H28M2A	28000	28000	27000	4	4	21	12	61	35	31.88 x 37.25 x 16.13
DRA5H36M2A	36000	36000	38000	5	5	21.5	12.2	65	40	38.38 x 37.25 x 16.31
DRA6H48M2A	47000	49000	48000	6	6	21.2	12	65	40	52.50 x 37.50 x 16.31
DRA6H55M2A	53000	55000	48000	6	6	21.4	12	65	40	52.50 x 37.50 x 16.31

Capacities can vary based on the indoor units connected.

¹ AHRI conditions measured at 95°F (A1Full)

² AHRI conditions measured at 47°F (H1Full)

³ Capacity under AHRI M1 conditions (H42): Indoor 70°F DB, 67°F WB // Outdoor 5°F DB, 4°F WB

OUTDOOR UNITS



Our large variety of indoor units pair with both single zone and multi-zone outdoor units that have been engineered to withstand the toughest external conditions and keep the system running reliably.

- High-efficiency heat pump up to 26 SEER2
- Low ambient heating down to -13°F
- Low ambient cooling down to -13°F
- Included base pan heater
- Inverter compressor
- Auto-restart feature
- Anti-corrosion golden fin coating
- Port adaptors included

OUTDOOR UNITS - STANDARD SINGLE ZONE

Model #	Cooling Capacity ¹ (BTU)	Heating Capacity ² (BTU)	SEER2	EER2	HSPF2	Refrigerant Line (Liquid/Suction) (in. OD)	Outdoor Sound Rating (dBA)	Rec. Breaker (A)	Dimensions (in.)(HxWxD)
DRA1U09S2A	9000	10000	26	14.7	13	1/4 X 3/8	52.5	15	21.88 X 30.13 X 11.94
DRA1U12S2A	12000	12000	24.6	12.2	11.5	1/4 X 3/8	54	15	21.88 X 30.13 X 11.94
DRA1U18S2A	18000	18000	24	13.5	11.1	1/4 X 1/2	59	20	26.50 X 35.06 X 13.50
DRA1U24S2A	24000	25000	23.5	13	10	3/8 X 5/8	60	25	31.88 X 37.25 X 16.13

OUTDOOR UNITS - STANDARD MULTI-ZONE

Model #	Cooling Capacity ¹ (BTU)	Heating Capacity ² (BTU)	Max # of Zones	SEER2	EER2	HSPF2	Outdoor Sound Rating (dBA)	Rec. Breaker (A)	Dimensions (in.)(HxWxD)
DRA3U18M2A	18000	19000	3	23	12.5	10	60	20	26.50 X 35.06 X 13.50
DRA4U28M2A	26000	27000	4	23	12.2	9.5	61	25	31.88 X 37.25 X 16.13
DRA5U36M2A	35000	37000	5	23.1	12	10	63	35	31.88 X 37.50 X 16.13
DRA6U48M2A	45000	48000	6	21.3	11.7	10	65	40	52.50 X 37.50 X 16.31
DRA6U60M2A	60000	60000	6	19.2	10	9.6	65	40	52.50 X 37.50 X 16.31

Capacities can vary based on the indoor units connected.

¹ AHRI conditions measured at 95°F (A1Full)

² AHRI conditions measured at 47°F (H1Full)

MINI-SPLITS / INDOOR UNITS

WALL MOUNTED



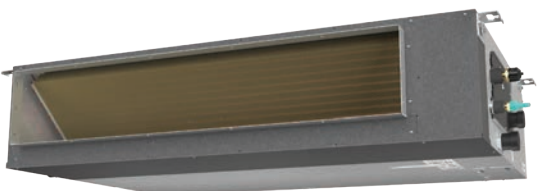
Mounting to the wall, these units offer a slim profile to blend seamlessly into any interior design.

- Single or multi-zone compatible
- Wireless Remote Control with “Follow Me” technology
- Compatible with wired thermostat DRSTAT101 (purchased separately)
- High efficiency up to 26 SEER2
- Quiet operation as low as 20 dB
- Swing, Turbo, Eco, Sleep modes and more
- RDS sensor factory installed for easy installation

Model #	Cooling Capacity (BTU)	Heating Capacity (BTU)	Sound Rating (dBA)	Refrigerant Line (Liquid/ Suction) (in. OD)	Weight (lbs)	Dimensions (in.) (H x W x D)
DRAW06F2A	6000	7000	37/ 32/ 24/ 20	1/4 x 3/8	18	11.50 x 28.69 x 7.88
DRAW09F2A	9000	10000	39.5/ 33/ 24/ 20.5	1/4 x 3/8	19	11.63 x 31.56 x 7.63
DRAW12F2A	12000	12000	42/ 35.5/ 22.5/ 20	1/4 x 3/8	19	11.63 x 31.56 x 7.63
DRAW18F2A	18000	18000	45/ 40/ 24.5/ 20	1/4 x 1/2	30	13.25 x 42.56 x 9.63
DRAW24F2A	24000	25000	49.5/ 43.5/ 34.5/ 20.5	3/8 x 5/8	31	13.25 x 42.56 x 9.63
DRAW33F2A	33000	36000	52.5/ 46.5/ 29.5/ 23	3/8 x 3/4	43	14.25 x 49.56 x 11.13



SLIM DUCTED



Adding slim-ducted mini-splits to a space's existing registers can create zones for an otherwise zoneless system or bring airflow to new additions.

- Single or multi-zone compatible
- Low and high static pressure models available
- Horizontal and vertical installation
- DRSTAT101 programmable wired remote included
- High efficiency up to 21.4 SEER2
- Quiet operation as low as 24 dB
- Turbo, Eco, Sleep modes and more
- Included drain pump
- RDS sensor factory installed for easy installation

Model #	Cooling Capacity (BTU)	Heating Capacity (BTU)	Static Pressure (in. WC/Pa)	Sound Rating (dBA) High/Med/Low/Silent	Refrigerant Line (Liquid/ Suction) (in. OD)	Weight (lbs)	Dimensions (in.) (H x W x D)
DRADL0612F2A*	6500 - 12000	8000 - 12500	0 - 0.4 / 0 -100	34/ 32.5/ 29/ 24	1/4 x 3/8	62.2	7.88 x 27.56 x 19.94
DRADL18F2A	17000	20000	0 - 0.4 / 0 -100	40.5/ 39/ 38/ 35	1/4 x 1/2	92.6	8.25 x 34.63 x 26.56
DRADH0912F2A*	9000 - 12000	9900 - 12000	0 - 0.8 / 0 -200	30.5/ 29.5/ 28.5/ 28	1/4 x 3/8	64.2	9.69 x 27.56 x 31.31
DRADH18F2A	17500	20000	0 - 0.8 / 0 -200	37/ 35/ 33/ 29	1/4 x 1/2	92.6	9.69 x 39.38 x 31.31
DRADH24F2A	24000	26000	0 - 0.8 / 0 -200	40/ 38/ 35.5/ 29.5	3/8 x 5/8	122	9.69 x 39.38 x 31.31

*Models with Automatic Identification

MULTI-POSITIONAL AIR HANDLERS



Our single and multi-zone compatible air handlers can provide a high efficiency, zoned solution for a new build or an existing home's ductwork.

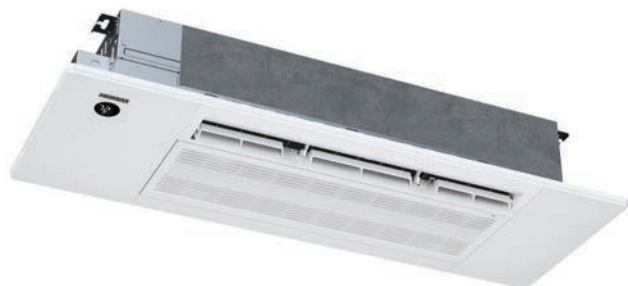
- Single or multi-zone compatible
- DRSTAT101 programmable wired remote included
- High efficiency up to 19.7 SEER2
- Constant volume variable speed motor
- RDS sensor factory installed for easy installation

Model #	Cooling Capacity (BTU)	Heating Capacity (BTU)	Sound Rating (dBA) High/Med/Low	Refrigerant Line (Liquid/ Suction) (in. OD)	Weight (lbs)	Dimensions (in.) (H x W x D)
DRAM18F2A	18000	18000	42.5/ 37.5/ 30	1/4 x 1/2	104.7	45.00 x 17.50 x 21.00
DRAM24F2A	24000	25000	43.5 /40/ 25.5	3/8 x 5/8	104.3	45.00 x 17.50 x 21.00

*Models with Automatic Identification

MINI-SPLITS / INDOOR UNITS

ONE-WAY CEILING CASSETTES



One-way cassettes offer many of the benefits of standard ceiling cassettes, but with a slim design that eliminates the need to cut into the rafters.

- Single or multi-zone compatible
- Wireless remote control with "Follow Me" technology
- High efficiency up to 24 SEER2
- Easy install and service between 16" joists
- Swing, Turbo, Eco, Sleep modes and more
- RDS sensor factory installed for easy installation

Model #	Cooling Capacity (BTU)	Heating Capacity (BTU)	Sound Rating (dBA) High/Med/Low/Silent	Refrigerant Line (Liquid/ Suction) (in. OD)	Weight (lbs)	Dimensions (in.) (H x W x D)
DRAL0612F2A*	6500 - 12000	7400 - 12500	37.5/ 35.5/ 26/ 23.5	1/4 x 3/8	82.5	9.00 x 50.31 x 13.19
DRAL18F2A	18000	20000	44/ 41.5/ 31/ 26	1/4 x 1/2	82.9	9.00 x 50.31 x 13.19

FOUR-WAY CEILING CASSETTES



Four-way ceiling cassettes can be installed flush with the ceiling for powerful comfort control in the most discreet package possible.

- Single or multi-zone compatible
- Wireless remote control with "Follow Me" technology
- High efficiency up to 22.6 SEER2
- Quiet operation as low as 33 dB
- Swing, Turbo, Eco, Sleep modes and more
- Built-in drain pump
- RDS sensor factory installed for easy installation

Model #	Cooling Capacity (BTU)	Heating Capacity (BTU)	Sound Rating (dBA) High/Med/Low/Silent	Refrigerant Line (Liquid/ Suction) (in. OD)	Weight (lbs)	Dimensions (in.) (H x W x D)
DRAC0912F2A*	9000 - 12000	10000 - 12000	40/ 37/ 26/ 24	1/4 x 3/8	35.3	9.63 x 22.44 x 22.44
DRAC18F2A	16800	19000	44/ 41/ 28.5/ 24.5	1/4 x 1/2	35.3	9.63 x 22.44 x 22.44
DRAC24F2A	24000	25000	45.5/ 43/ 33.5/ 30.5	3/8 x 5/8	47.2	8.06 x 32.69 x 32.69

*Models with Automatic Identification

FLOOR MOUNTED



The floor-mount unit's compact footprint fits perfectly beneath a window or in place of an existing radiator.

- Single or multi-zone compatible
- Wireless remote control with "Follow Me" technology
- High efficiency up to 27.2 SEER2
- Quiet operation as low as 19.5 dB
- Swing, Turbo, Eco, Sleep modes and more
- Compact footprint
- RDS sensor factory installed for easy installation

Model #	Cooling Capacity (BTU)	Heating Capacity (BTU)	Sound Rating (dBA) High/Med/Low/Silent	Refrigerant Line (Liquid/ Suction) (in. OD)	Weight (lbs)	Dimensions (in.) (H x W x D)
DRAS09F2A	9000	9000	39/ 34.5/ 29.5/ 19.5	1/4 x 3/8	32.9	24.45 x 31.25 x 7.88
DRAS12F2A	12000	12000	39/ 34.5/ 29.5/ 23.5	1/4 x 3/8	32.9	24.45 x 31.25 x 7.88
DRAS16F2A	16000	17000	41.5/ 39/ 28.5/ 24	1/4 x 1/2	32.9	24.45 x 31.25 x 7.88

FLOOR/CEILING MOUNTED



A dynamic option based on the needs of the space, the flex mini-split can be installed up high or down low for top-to-bottom comfort.

- Single or multi-zone compatible
- Wireless remote control with "Follow Me" technology
- High efficiency up to 22.3 SEER2
- Quiet operation as low as 29 dB
- Swing, Turbo, Eco, Sleep modes and more
- Flexible installation options for floor or ceiling install
- RDS sensor factory installed for easy installation

Model #	Cooling Capacity (BTU)	Heating Capacity (BTU)	Sound Rating (dBA) High/Med/Low/Silent	Refrigerant Line (Liquid/ Suction) (in. OD)	Weight (lbs)	Dimensions (in.) (H x W x D)
DRAF18F2A	18000	18000	43/ 40/ 32/ 29	1/4 x 1/2	92.6	26.56 x 42.06 x 9.25
DRAF24F2A	24000	24400	49/ 45/ 34/ 29	3/8 x 5/8	122.1	26.56 x 42.06 x 9.25

ACCESSORIES



DRSTAT101 FEATURES

- 7-day programmable scheduling
- Dry, Sleep, Eco and Turbo modes
- Multiple unit control
- Molex plug or non-polar two-wire connection flexibility



DR24VINT2 FEATURES

- Allows any 24V thermostat to connect with the Durastar indoor unit
- Preserves inverter functionality
- Powered via indoor unit or separate power source (transformer not included)

ACCESSORIES – COMING SOON Q2 2025

Model #	Accessory
DRWIFIADPT1	WIFI APP ADAPTER MODULE
DRSTAT101W	PROGRAMMABLE WIRED THERMOSTAT WITH WIFI CONNECTIVITY



PACKAGED TERMINAL AIR CONDITIONERS

Beyond the assurance that comes with the quality construction and warranty of Durastar products, our PTACs also offer wide-ranging compatibility—with third-party thermostats, with remote controls and with existing infrastructure. Designed to fit a standard wall sleeve, Durastar PTACs simplify and streamline the upgrade to affordable, energy-efficient heating and cooling.



PACKAGED TERMINAL AIR CONDITIONERS

R-32 Refrigerant



Durastar PTACs are durably constructed to hold up to commercial use. Using an industry standard footprint, Durastar PTACs can easily slide into many existing wall sleeves allowing for low upfront installation costs.

Durastar PTACs are made to last and we stand behind them with a 5-year limited warranty.



FEATURES

- Fits standard wall sleeve
- LCDI power cord included
- Automatic room freeze protection at 32°F in an unoccupied room
- Washable filters
- 5-year limited warranty



BENEFITS

- Durable construction
- Slide-in/slide-out installation
- Low upfront install cost
- Ductless installation
- Easy operation

COOLING SERIES

Model #	Voltage (V)	Cooling Capacity (BTU)	Heat Pump Heating Capacity (BTU)	Electric Resistance Heating Capacity (BTU)	Electric Heat (kW)	LCIDI Plug Type	EER	Dimensions (in.) (H x W x D)	Refrigerant
DRPTAC07Y32351A	208-230	7300/7200	-	10900/8900	3.5	6-20P	13.1	16.0 X 42.0 X 21.0	R-32
DRPTAC09Y32351A	208-230	8800/8700	-	10900/8900	3.5	6-20P	12.8	16.0 X 42.0 X 21.0	R-32
DRPTAC12Y32351A	208-230	12000/11800	-	10900/8900	3.5	6-20P	11.6	16.0 X 42.0 X 21.0	R-32
DRPTAC15Y32351A	208-230	14700/14500	-	10900/8900	3.5	6-20P	10.6	16.0 X 42.0 X 21.0	R-32
DRPTAC15Y32501A	208-230	14700/14500	-	15000/12200	5.0	6-30P	10.6	16.0 X 42.0 X 21.0	R-32

HEAT PUMP SERIES

Model #	Voltage (V)	Cooling Capacity (BTU)	Heat Pump Heating Capacity (BTU)	Electric Resistance Heating Capacity (BTU)	Electric Heat (kW)	LCIDI Plug Type	EER	Dimensions (in.) (H x W x D)	Refrigerant
DRPTHP07Y32351A	208-230	7200/7100	6200/6000	10900/8900	3.5	6-20P	13.1	16.0 X 42.0 X 21.0	R-32
DRPTHP09Y32351A	208-230	9200/9100	7800/7500	10900/8900	3.5	6-20P	12.8	16.0 X 42.0 X 21.0	R-32
DRPTHP12Y32351A	208-230	12000/11800	10800/10500	10900/8900	3.5	6-20P	11.6	16.0 X 42.0 X 21.0	R-32
DRPTHP15Y32351A	208-230	14700/14500	13500/13200	10900/8900	3.5	6-20P	10.6	16.0 X 42.0 X 21.0	R-32
DRPTHP15Y32501A	208-230	14700/14500	13500/13200	15000/12200	5.0	6-30P	10.6	16.0 X 42.0 X 21.0	R-32

ACCESSORIES

In addition to the accessories listed below, be sure to ask your salesman about other compatible options, such as architectural grilles, wireless thermostats, sub-bases, hardwire kits and more.

Model #	Accessory	Dimensions (in.) (H x W x D)
DRPTACWS	FOLDABLE WALL SLEEVE	16.0 x 42.0 x 14.75
DRPTACAG	STAMPED ALUMINUM GRILLE	16.0 x 42.0



ROOM AIR CONDITIONERS

Our Room Air units concentrate the durability and performance of the entire Durastar offering into maximizing the comfort of a single room. Our options support custom comfort via three configurations, each packed with user-friendly features.



WINDOW AIR CONDITIONERS



Installed directly in the window, these units are offered in a variety of sizes, so you can find the best option compatible with your window and room size.

- 2-year limited warranty
- Sleek design in window blends into any space
- Remote control
- Three fan speeds
- Digital display
- 24-hour timer
- Cooling-only units or Cooling/Heating units available

Model #	Voltage (V)	Cooling Capacity (BTU)	Electric Resistance Heating Capacity (BTU)	LCDI Plug Type	CEER	Dimensions (in.) (H x W x D)	Refrigerant
DRWAC081XNA1	115	8000	–	5-15P	10.9	13.38 X 18.56 X 15.75	R-32
DRWAC101XNA1	115	10000	–	5-15P	10.9	14.63 X 21.44 X 19.00	R-32
DRWAC121XNA1	115	12000	–	5-15P	10.9	14.63 X 21.44 X 19.00	R-32
DRWHC081XNA1	115	8000	3500	5-15P	10.9	14.63 X 21.44 X 19.00	R-32
DRWHC122XNA1	208-230	12000	11000	6-20P	10.9	14.63 X 21.44 X 19.00	R-32
DRWHC182XNA1	208-230	18800	16000	6-30P	10.7	17.94 X 23.63 X 17.38	R-32
DRWHC232XNA1	208-230	23200	16000	6-30P	9.4	17.94 X 23.63 X 17.38	R-32

CASEMENT AIR CONDITIONERS



Specifically designed for casement windows, these units offer the same cooling solutions as our traditional window units—without requiring modifications to your existing window set-up.

- 2-year warranty
- Sleek design blends seamlessly into casement windows
- Remote control
- Three fan speeds
- Digital display
- 24-hour timer
- Cooling capabilities up to 10,000 BTUs

Model #	Voltage (V)	Cooling Capacity (BTU)	Electric Resistance Heating Capacity (BTU)	LCDI Plug Type	CEER	Dimensions (in.) (H x W x D)	Refrigerant
DRCAC101XNA1	115	10000	–	5-15P	10.4	20.88 X 14.56 X 23.50	R-32

ROOM AIR CONDITIONERS

THROUGH THE WALL AIR CONDITIONERS



Install in any room with an exterior for immediate comfort in your space. The wall sleeve simplifies the installation process, and our sleek design allows for seamless integration anywhere.

- 2-year warranty
- Does not compromise floor/window space
- Remote control
- Three fan speeds
- Digital display
- 24-hour timer
- Cooling-only units or Cooling/Heating units available

Model #	Voltage (V)	Cooling Capacity (BTU)	Electric Resistance Heating Capacity (BTU)	LCDI Plug Type	CEER	Dimensions (in.) (H x W x D)	Refrigerant
DRTAC081XNA1	115	8000	-	5-15P	9.6	14.50 X 24.25 X 20.25	R-32
DRTAC101XNA1	115	10000	-	5-15P	9.6	14.50 X 24.25 X 20.25	R-32
DRTAC102XNA1	208-230	10000	-	6-15P	9.6	14.50 X 24.25 X 20.25	R-32
DRTAC121XNA1	115	12000	-	5-15P	9.5	14.50 X 24.25 X 20.25	R-32
DRTAC122XNA1	208-230	12000	-	6-15P	9.5	14.50 X 24.25 X 20.25	R-32
DRTAC142XNA1	208-230	14000	-	6-15P	9.5	14.50 X 24.25 X 20.25	R-32
DRTHC081XNA1	115	8000	4200	5-15P	9.6	14.50 X 24.25 X 20.25	R-32
DRTHC102XNA1	208-230	10000	10600	6-20P	9.6	14.50 X 24.25 X 20.25	R-32
DRTHC122XNA1	208-230	12000	10600	6-20P	9.5	14.50 X 24.25 X 20.25	R-32
DRTHC142XNA1	208-230	14000	10600	6-20P	9.5	14.50 X 24.25 X 20.25	R-32

UNIVERSAL WALL SLEEVE ACCESSORY

Model #	Dimensions (in.) (H x W x D)
DRWTCSLV	15.25 x 25.50 x 17.50



REFERENCES

Learning more about our products helps ensure you select the right products for your projects.



GLOSSARY OF TERMS

UNIT FEATURES

Feature	Description
Included Basepan and Crankcase Heater	All Durastar outdoor units include a basepan and crankcase heater, allowing the unit to function reliably at lower operating temperatures.
Golden Fin Coating	The Golden Fin coating is salt-spray-tested for over 1000 hours. It repels harmful corrosives such as acid rain and salt. This increases the durability and longevity of the system.
Compatible with 24V Thermostat Interface	All Durastar mini-split indoor units are compatible with the DR24VINT2 24V interface. When connected, the interface allows third-party thermostats with WiFi compatibility to control the indoor unit.
Static Pressure Adjustment	Slim-ducted and air handler units have an automatic static pressure adjustment function to fine tune the airflow to the home's ductwork for added comfort and temperature regulation.
Humidity Setting	The unit optimizes the desired humidity level during DRY mode using a built-in humidity sensor.
Eco/Gear Mode	When in these modes during cooling operation, the unit can reduce its energy consumption in three tiers ranging from 10 to 50%.
Silent and Turbo Mode	Set the unit to a whisper or ramp up the power with SILENT or TURBO modes. TURBO enables the unit to reach the set temperature in the shortest time by automatically controlling the fan speed.
Follow Me Function	FOLLOW ME uses the temperature at the remote's location, instead of the indoor unit's location, to optimize the temperature around the user and ensure maximum comfort.
Swing/Gentle Feature	These features allow the airflow to be directed and circulated around the room.
Sleep Mode	SLEEP mode reduces energy consumption by adjusting the temperature in slow minor increments. SLEEP mode automatically cuts off after 8 hours and the unit returns to normal operation.
Timer Function	Automate the unit based on a desired schedule using the TIMER function included on the unit remote. In addition, the DRSTAT101 wired thermostat includes a programmable WEEKLY TIMER function for settings all week long.
Refrigerant Leak Detection	These units include a UL-certified refrigerant leak detector which protects itself and the environment by automatically detecting a refrigerant leak.
Active Clean	The Active Clean technology washes away dust, mold and grease that adhere to the coil over time. The unit automatically freezes and then rapidly thaws frost on the indoor coil that is then dried by the indoor blower. This helps to prevent mold growth and odor, keeping the indoor coil clean.
Automatic BTU Identification	In single-zone applications, units with this feature automatically identify the BTU they are paired with on startup. In multi-zone applications, a dip switch adjustment is required.

*** Unit features vary based on the indoor unit purchased.
Some features may not be included or the unit may have additional features.
See resources on Durastar.com for more details.

WARRANTY



NO ONE STANDS BEHIND THEIR BRAND LIKE WE DO.

Durastar offers durable airflow through even the harshest heating and cooling conditions, and our warranty provides maximum coverage for total peace of mind.

Extended warranty options are available for both parts and labor.

Ask your sales associate for more information.

For complete details on Durastar's warranty information, visit **durastar.com** to access a copy of the product warranty certificate.

UNITARY EQUIPMENT ^{1,2}

PARTS	10 YEARS
COMPRESSORS	10 YEARS
HEAT EXCHANGERS	10-15 YEARS ³

DUCTLESS UNITS ^{1,2}

RESIDENTIAL PARTS	10 YEARS
COMMERCIAL PARTS	5 YEARS

PTACS

PARTS AND LABOR	1 YEAR
SEALED SYSTEM PARTS AND LABOR	5 YEARS
SELECT PARTS	5 YEARS

ROOM AIR PRODUCTS ⁴

PARTS AND LABOR	2 YEAR
-----------------	--------

¹ After registration at www.durastar.com/warranty-registration

² Extended warranty options available

³ Warranty varies by furnace model

⁴ See user/installation manual for complete details

MINI-SPLIT SINGLE ZONE COMPATIBILITY CHART

Type	BTU/h	Model Number	Sirius Heat™	Sirius Heat™	Sirius Heat™
			DRA1H06S2A	DRA1H09S2A	DRA1H12S2A
Wall Mounted	6,000	DRAW06F2A	✓		
	9,000	DRAW09F2A		✓	
	12,000	DRAW12F2A			✓
	18,000	DRAW18F2A			
	24,000	DRAW24F2A			
	33,000	DRAW33F2A			
Ceiling Cassette	9,000 – 12,000	DRAC0912F2A		✓	✓
	18,000	DRAC18F2A			
	24,000	DRAC24F2A			
One-way Cassette	6,000 – 12,000	DRAL0612F2A	✓	✓	✓
	18,000	DRAL18F2A			
Low Static Slim Ducted	6,000 – 12,000	DRADL0612F2A	✓	✓	✓
	18,000	DRADL18F2A			
High Static Slim Ducted	9,000 – 12,000	DRADH0912F2A		✓	✓
	18,000	DRADH18F2A			
	24,000	DRADH24F2A			
Floor/Ceiling Flex	18,000	DRAF18F2A			
	24,000	DRAF24F2A			
Floor Mounted Console	19,000	DRAS09F2A		✓	
	12,000	DRAS12F2A			✓
	16,000	DRAS16F2A			
Air Handler	18,000	DRAM18F2A			
	24,000	DRAM24F2A			

Sirius Heat™	Sirius Heat™	Sirius Heat™	Standard	Standard	Standard	Standard
DRA1H18S2A	DRA1H24S2A	DRA1H33S2A	DRA1U09S2A	DRA1U12S2A	DRA1U18S2A	DRA1U24S2A
			✓			
				✓		
✓					✓	
	✓					✓
		✓				
			✓	✓		
✓					✓	
	✓					✓
			✓	✓		
✓					✓	
			✓	✓		
✓					✓	
			✓	✓		
✓					✓	
	✓					✓
✓					✓	
	✓					✓
			✓			
				✓		
✓					✓	
✓					✓	
	✓					✓



Visit us online to learn more about Durastar products.

[DURASTAR.COM](https://www.durastar.com)

Specifications shown in this brochure are subject to change without notice. See complete warranty for terms, conditions and limitations.

©2025 Ferguson Enterprises, LLC 0125 7105182